

# Survey on Novel Corona Virus (COVID-19): World Pandemic

Nikhil Prakash Gaikwad<sup>1</sup>, Prof. Vaishali Gatty<sup>2</sup>

<sup>1</sup>Student

<sup>2</sup>Department of MCA, Vivekanand Education Society's Institute of Technology (VESIT), University of Mumbai, India.

\*\*\*

**Abstract:** This article is in depth review concerning the novel corona virus disease (nCOVID) or corona virus disease -19 (COVID-19) and its impact over the world. It's generally deals with the impact in numerous countries with the comparative study of confirmed cases, recovery ratio and death ratio of COVID-19. This disease affects the breathing system and it transmits through the droplets of spittle, cough and sneeze of nose of infected people COVID-19 was 1st time reported in city town of Hubei Province of china in Dec 2019 that is afterward 11 March 2020 becomes pandemic declared by World Health Organization (WHO). The COVID-19 pandemic, conjointly called the coronavirus pandemic, is currently ongoing pandemic of coronavirus disease 2019 (COVID 19), caused by severe acute respiration process syndrome coronavirus 2 (SARS CoV 2). The 1st case of the virus was reported at Wuhan city, China, in Dec 2019. As of 1st June 2020, quite 6.15 million cases of COVID-19 are reported in greater than 188 countries and territories, leading to quite 371,000 deaths; about 2.63 million patients have recovered.

**Key Words:** Corona virus, COVID-19, Comparative Study

## 1. INTRODUCTION

The 1st case of Corona Virus (COVID-19) was reported in China's Hubei's Wuhan city in December-2019 and has infected millions of people till date. With 106,241 deaths in United States of America alone, it has now become an epicentre of the deadly virus. On December 1, the symptom onset date of the first patient identified. 5 days after the person was unwell, his fifty-three year old wife who had no exposure to the city market was also detected with pneumonia and was quarantined in isolation ward in the hospital. By the 2nd week of December the number of people infected with virus rose, at this moment the Wuhan doctors indicated that the virus is spreading through human contact and is contagious. On 25th December, the medical staff in two medical facilities in China's Hubei's Wuhan city were suspected of carrying the viral pneumonia and were put into the isolation ward. In late December 2019 the hospitals in Wuhan detected an exponential spike in the number of cases which cannot be anyhow linking back to the Huanan Seafood Wholesale Market which was consider to be the first source of virus breakthrough. Later, Chinese officials ruled out the possibility that this was a recurrence of the severe acute respiratory syndrome (SARS) virus - an illness that originated in China and killed more than thousands of

people around the world between 2002-2003. On 7th January 2020, according to WHO the officials in china had announced that they had identified a new deadly virus.

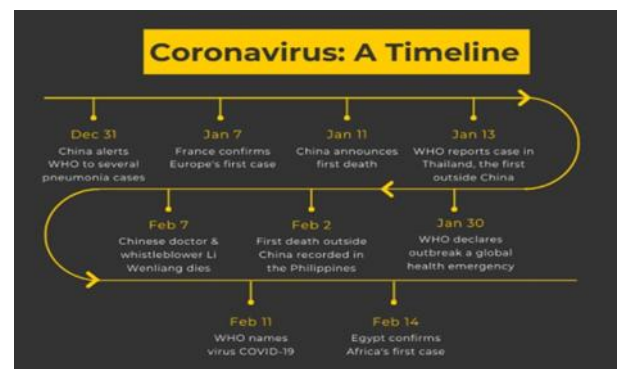


Fig-1: Corona virus Timeline

The new virus was given the name 2019nCoV and was classified to be belonging to the coronavirus family, which consists of common cold and SARS. Primarily, it had an outbreak in China because of human to human transmission. From china later it exported to japan and Thailand. After couple of week COVID-19 outbreak has moved to Europe, United States and other Asian countries rapidly. To date mostly affected countries are America, Russia and from Europe because they make mistake of not locked down at early stage. To date, most of the countries in the world have reported the spread of COVID-19 as per WHO. Around a 29.7 million population is infected by this disease in which around 940,285 deaths reported as of 16<sup>th</sup> September 2020. Worst affected part of the world for this outbreak is USA where around 27.45% cases of the world get affected as of 16<sup>th</sup> September 2020. Among all countries around the world united states, India, Brazil, Russia are in the top list of affected countries.

## What are the Symptoms?

WHO has analyzed some sign of infection which include cough, fever, shortness of breath and difficulty in breathing. Some other signs include muscle aches as well as loss of taste or smell. In some cases which are more severe, it can even lead to pneumonia, multiple organ failure and even death.

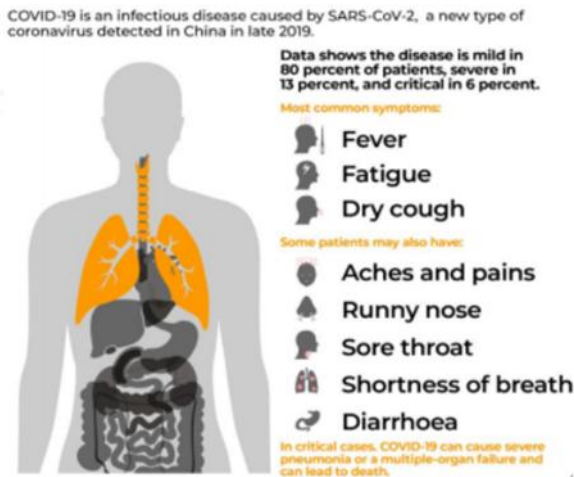


Fig-1: COVID-19 Symptoms

Currently it is estimated that the incubation period of the virus viz. the time between infection and the onset of the system ranges from 1 to 14 days. Most of the people who get infected show the symptom within 5 to 6 days. However, in some cases in which the patient is infected even though they don't not show any symptoms of carrying the virus meaning they are asymptomatic.

2. Comparative study of COVID-19

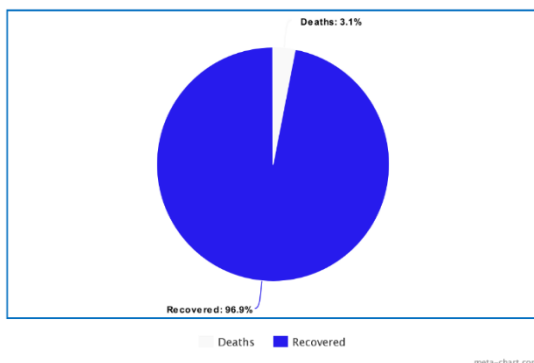


Chart-1: Death and Recovery (in %)

Figure 1 shows the data of COVID-19, worldwide the good thing that the recovery rate is also impressive as data shows 96% patients recovered.

The numbers of covid-19 patients increasing very rapidly and till date it is going to touch the figure of a million, in which mostly affected countries are USA, India, Brazil, Russia and from Europe as mention in figure 2 and figure 3. Although it started from china even though US and Europe are in top of the list of infected patients. Presently China became the 43<sup>rd</sup> most affected countries by the COVID-19.

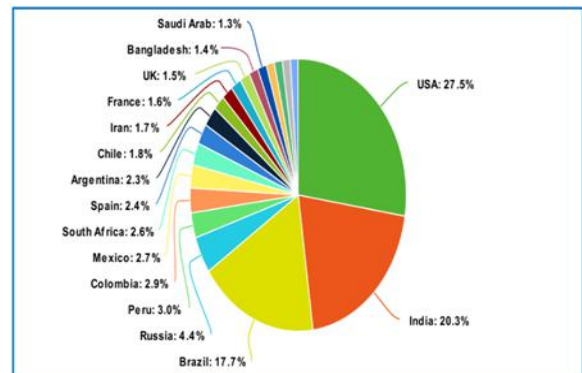


Chart-2: Worldwide confirmed cases

Reason could be anything but social distancing and isolation plays a key role and it can break the chain of virus spreading. A controversy was created by the president Donald Trump as he said, the COVID -19 is a Chinese virus and united stated going to file a complaint against China. He said because of certain data actually, it can be seen from the figure 4, which is clearly shows that the recovery rate in China is very high and it is much higher than other countries which make china under suspicion

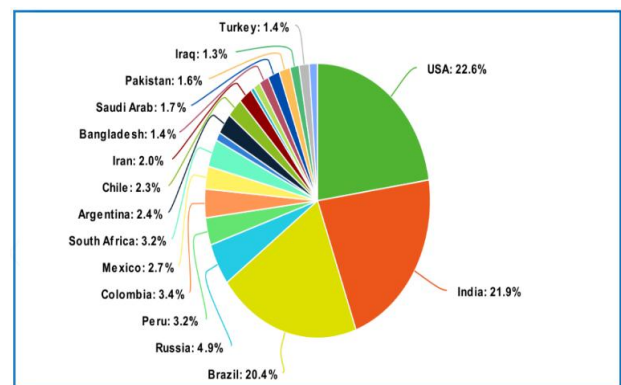


Chart-3: Recoveries Worldwide

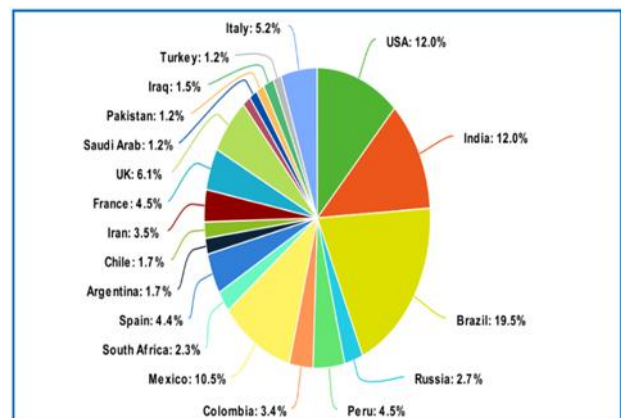


Chart-4: Deaths Worldwide

It is very shocking and sad the till 16<sup>th</sup> September 2020 around 940,515 death recorded around the world. Reason of such huge loss was community spread which is very dangerous and can spread the disease exponentially.

### 3. How India is dealing with COVID-19

India learned the lesson from all these countries and lockdown the country for 21 days although it not sure whether the 21 days will be enough to quarantine the nation or Government can increase the days of lockdown after it. Along with this, government issue guideline for the social distancing.

- Maintain at least 1-meter distance in market place, medical store, hospitals, etc.
- Keep cool during shopping for essential goods/ medical supplies.
- Avoid frequent trip to market to buy groceries and medical supplies.
- Avoid any kind of physical contact at the time of greeting each other.
- Avoid non-essential social gathering at home.
- Avoid taking people in your house and also follow the same.

Before the lock down the confirmed cases of corona was start to increase exponentially as shown in figure 5.

Although the number of cases increased during the lockdown period but not increasing exponentially because it very hard to tackle such a big population and people violating the locking down. Currently as of 16<sup>th</sup> September 2020 India holds 2<sup>nd</sup> position on the list of coronavirus cases with around 5,041,681 total cases, 82,286 deaths and 3,960,965 recovered cases.

### References

1. <https://www.worldometers.info/coronavirus/>
2. [https://covid19.who.int/?gclid=EAIaIQobChMI1907Iibv6QIVUX8rCh0sPg-JEAAAYAiAAEgK0BvD\\_BwE](https://covid19.who.int/?gclid=EAIaIQobChMI1907Iibv6QIVUX8rCh0sPg-JEAAAYAiAAEgK0BvD_BwE)
3. [https://www.aljazeera.com/news/2020/01/coronavirus-symptoms-vaccines-risks-200122194509687.html?utm\\_source=website&utm\\_medium=article\\_page&utm\\_campaign=read\\_more\\_links](https://www.aljazeera.com/news/2020/01/coronavirus-symptoms-vaccines-risks-200122194509687.html?utm_source=website&utm_medium=article_page&utm_campaign=read_more_links)
4. [https://www.google.com/url?sa=D&q=https://en.wikipedia.org/wiki/Aarogya\\_Setu&ust=1600423680000000&u sg=AOvVaw0r1FeFweYJxz96BUy1tJCJ&hl=en](https://www.google.com/url?sa=D&q=https://en.wikipedia.org/wiki/Aarogya_Setu&ust=1600423680000000&u sg=AOvVaw0r1FeFweYJxz96BUy1tJCJ&hl=en)

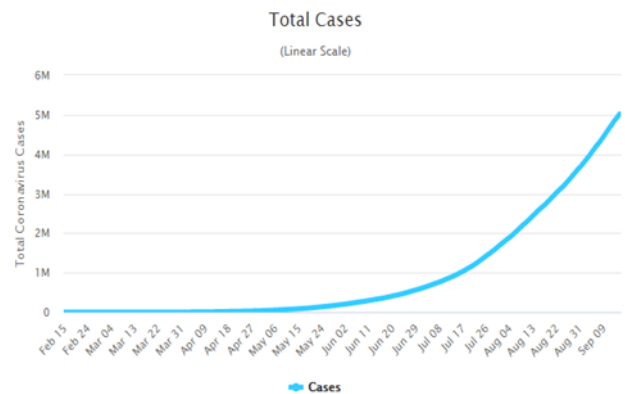


Chart-5: Confirmed COVID-19 cases in India

India has developed an application by the name Arogya Setu and was released on 26<sup>th</sup> May 2020. This application helps the user to identify whether the individual is at the risk of getting infected by the novel COVID-19 by checking if they by any chance came in contact with any infected person.

The application also gives the statistics about the infected, recovered, total deaths state wise and also the information about the upcoming policies specially designed for the people to help them during this crisis.

### 4. Conclusion

Majority of the people infected with COVID-19 experience mild to moderate respiratory problems and get recovered without any special medical treatment. Senior people, and those people with existing health problems like diabetes, high blood pressure, respiratory illness and cancer have more chances of developing a serious illness. The only way we can prevent or slow down the spread of COVID-19 is by being well informed and by spreading the awareness among the people about how it spreads, if the people start working on the individual level to stop the spread of virus it will be soon vanished from the world and we all can return back to our routine.