

BEHAVIOUR OF PREFABRICATED STEEL REINFORCED CONCRETE COLUMN WITH CORE UNDER MONOTONIC AXIAL LOAD

Ashlin T. V¹, Nikhil R²

¹P G Scholar, Structural Engineering, Universal Engineering College, Thrissur, Kerala

²Assistant Professor, Dept. of Civil Engineering, Universal Engineering College, Thrissur, Kerala

Abstract - In this paper Prefabricated Steel Reinforced Concrete (PSRC) system is introduced. PSRC columns, in which, the steel angles are placed at corners of cross section and are connected by transverse reinforcement which provide shear resistance, concrete confinement and bond resistance between concrete and steel angles. The parametric study includes the comparison between the PSRC column with and without core. Specimen with core consists of various shapes. Compression test were performed analytically over 30 specimens to evaluate the axial compression capacity and force deformation behaviour. The analytical results show that the structural performance of PSRC columns with core have better performance than that of specimen without core.

Key Words: Composite columns, Compression test, Concentric axial load, Eccentric axial load, High strength concrete, High strength steel, Prefabricated steel angle, Reinforced concrete, Steel equal angle section, Precast concrete core

1. INTRODUCTION

Columns are essential structural members that are vulnerable to the brittle failure, that they carry high axial compressive load and difficult to satisfy their plasticity demand compared to beams. High-strength materials improve structural safety and space efficiency. Thus, the utilization of high strength composite columns is growing within the development of building and long-span structures. Reinforced concrete (RC) has been used within the development of assorted structures for many years. For the development of structures like buildings, parking garages, high-rise structures and bridges, concrete is employed as common material. Concrete is robust in compression but weak in tension, therefore, might finish in cracking and failure under large tensile stresses. Steel has the high tensile capability and should use in areas with high tensile stresses to form up for the low rigidity of cement. Concrete, as a usually modest material with capability to oppose high-compression and steel, as a material with high rigidity, work on providing a mechanism to resist the applied loading has created strengthened cement concrete a typical compound for construction works. samples of such combinations in structural constructions are conventional rebar concrete, steel-concrete composite system and welded wire fabric system. Steel-concrete composite columns like Concrete-Enclosed Steel (CES) and Concrete-Filled Steel

Tube (CFST) columns, prefabricated Cage System (PCS) have massive supporting capability because of composite action.

2. FINITE ELEMENT ANALYSIS

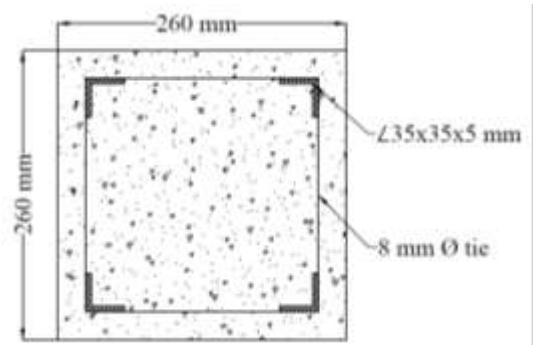
2.1 General

Finite Element Analysis has been used in many previous researches to predict the behaviour of Composite column when under load, using commercial finite element software like ANSYS and ABAQUS. In this study, a finite element model is developed to stimulate the behaviour of PSRC short column using ANSYS 16.1 software. The type of analysis used is a non-linear analysis. A number of 30 models were created to simulate the axial capacity and failure modes of these models and to compare them with the conventional reinforcement column. The details of the specimen are described in Table 1.

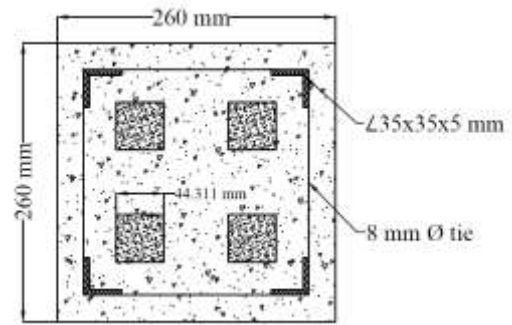
Table -1: Details of Specimen

Classification	Properties	PSRC
Section	B × D (mm)	260 × 260
	A _g = BD (mm ²)	67,600
Concrete	f _c (MPa)	40
Steel	f _{ys} (MPa)	650
	Steel shape	4L-35x35x5 4L-50x30x4
Column length	Net length, L (mm)	900
Transverse reinforcement	Type	8mm Ø ties
	f _{yt} (MPa) Spacing (mm)	415 100

In this study a precast concrete core of high strength with different shapes are enclosed in the PSRC specimen. The area of the core is taken as same in all the specimens analyzed. The shapes modelled are circular, square, criss-cross and scattered square. They are loaded under the eccentricities of 0%, 25%, 50%, 75% and 92%. The cross-sectional details of the specimens analyzed here are shown in Fig. 1. The cores are made with high strength precast concrete of grade M65.

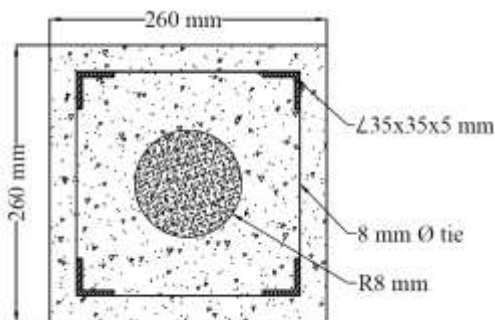


(a)

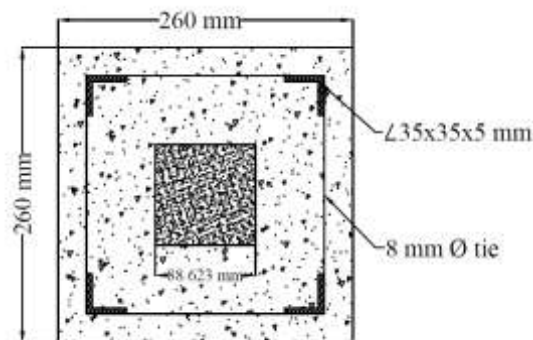


(e)

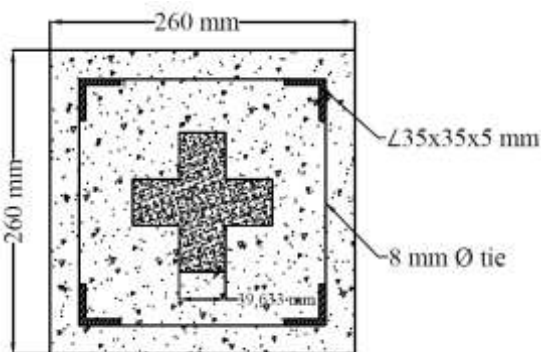
Fig -1: Cross – Sectional Details of PSRC Columns: (a) PSRC without core; (b) Circular; (c) Square; (d) Criss – Cross; (e) Scattered Square



(b)



(c)



(d)

2.2 Modelling and Meshing

The samples are modelled using the commercial software ANSYS 16.1. After preparing all the input data of material and geometrical properties, the column models were divided into small cubical elements. The fundamental concept of finite element method is dividing the geometry of a structure into finite number of elements, connected at finite number of points called nodes. A nonlinear finite element analysis was done to study the behaviour of composite column. Column specimens were meshed with similar pattern as column in validation shown in Fig. 2.

2.3 Boundary Condition and Loading

Following the testing procedures conducted by Kim et al. [5], the top surfaces of the PSRC columns were free and bottom surface were restrained against translation only. A loading plate was installed at the top surface and a base plate at the bottom surface, to simulate the experimental test. The axial load is applied in the form of a point load at eccentricities.

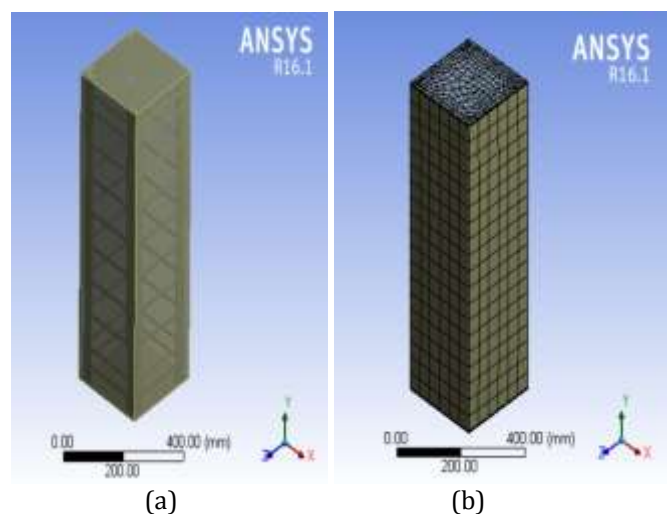


Fig -2: (a) Model of PSRC Specimen; (b) Meshing of PSRC Specimen

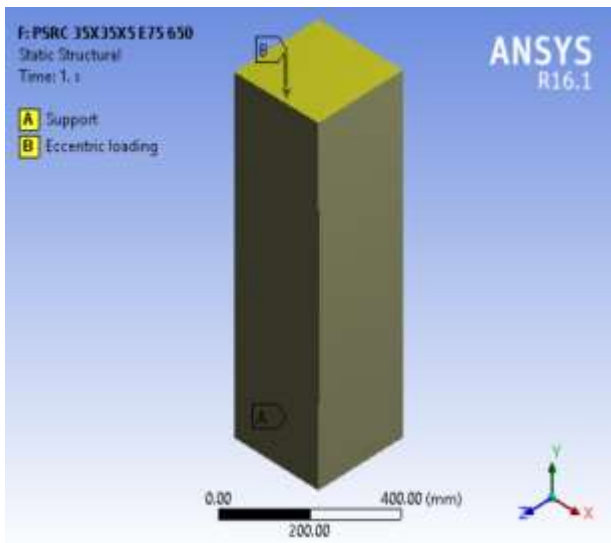


Fig -4: PSRC Column with Loading

The properties of materials for analysis are listed in Table 4.2.

Table 4.2 Material Properties

Properties	Concrete	Longitudinal Reinforcement	Transverse Reinforcement
Density	2300 kg/m ³	7850 kg/m ³	7850 kg/m ³
Modulus of elasticity	31623 MPa	2x10 ⁵ MPa	2x10 ⁵ MPa
Poisson's ratio	0.15	0.30	0.30
Compressive Strength	4.427 MPa	-	-
Yield Strength	-	345 MPa 650 MPa	415 MPa

2.3 Results and Discussion

By doing analysis of these the help of ANSYS 16.1 software following results was determined. The load – deformation details of the specimens are shown in table 3.

Table -3: Results from Analysis

Specimen	Eccentricity (%)	Load (kN)	Deformation (mm)
PSRC 650 without core	E-0	3484.3	6.389
	E-25	2834.6	15.486
	E-50	2270.9	18.717
	E-75	1880.5	15.671
	E-92	1613.8	12.580
PSRC 650 Circle	E-0	3955.7	4.897
	E-25	2900	8.558
	E-50	2337.4	18.003
	E-75	1935	18.491
	E-92	2027.1	17.718
PSRC 650 Square	E-0	3795.9	8.062
	E-25	2869.9	11.147
	E-50	2289.7	14.423
	E-75	1878.5	15.212
	E-92	1722	17.504
PSRC 650 Criss - Cross	E-0	3932.2	8.589
	E-25	2894.6	14.867
	E-50	2291.8	15.406
	E-75	1967.4	15.918
	E-92	1642	14.711
PSRC 650 scattered	E-0	4065.2	10.08
	E-25	3017.1	7.614
	E-50	2419	16.674
	E-75	2037	15.268
	E-92	1690.9	12.809

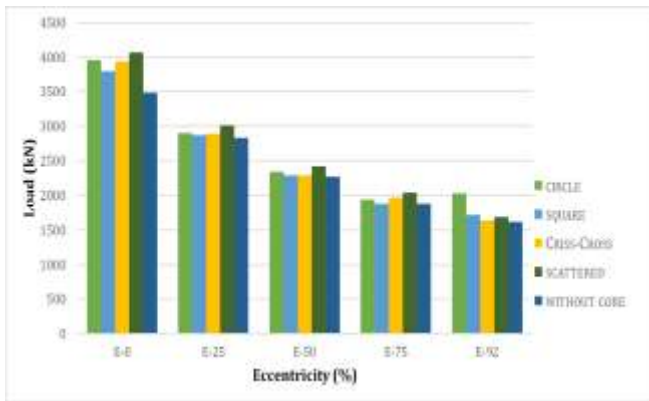


Chart -1: Load – Eccentricity values of PSRC 650 with and without core

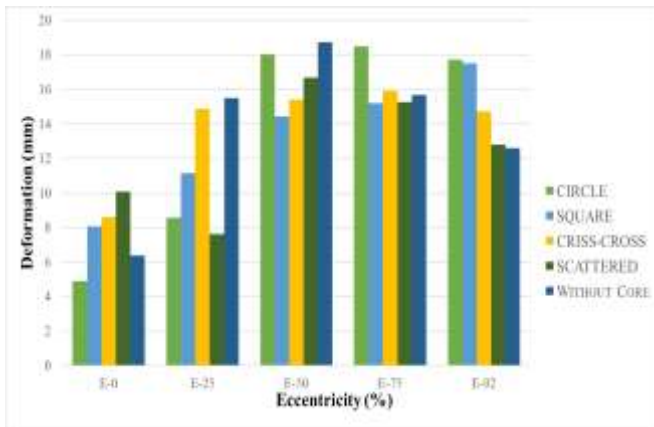


Chart -2: Deformation – Eccentricity values of PSRC 650 with and without core

From the above results we can analyze that, at eccentricities the PSRC specimen without core shows better deformation capacity.

3. CONCLUSIONS

- PSRC specimen with core shows a better deformation capacity under axial load PSRC specimen without core shows higher load carrying capacity at eccentricities.
- The specimens with core shoes high load carrying capacity than that of specimen without core
- Scattered core specimen shows 5.1% more load carrying capacity. This is due to the uniform distribution of area of moment of inertia.

REFERENCES

- Ayoob A. Ibrahim et al. (2017) Axial Load and Bending Moment Behaviour of Square High Strength Concrete (HSC) Columns Reinforced with Steel Equal Angle (SEA) Sections, International Conference on Structural Engineering Research, 43-48
- Ayoob Ibrahim et al. (2017) Performance Evaluation of Square High Strength Concrete (HSC) Columns Reinforced with Steel Equal Angle (SEA) Sections Under Axial Compression, International Conference on Structural Engineering Research, 37-42
- Chang-Soo Kim and Hyeon-Jong Hwang (2018) Numerical Investigation on Load-carrying Capacity of High-strength Concrete-encased Steel Angle Columns, International Journal of Concrete Structures and Materials, 1-17
- Chang-Soo Kim et al. (2017) Eccentric Axial Load Test for High-Strength Composite Columns of Various Sectional Configurations, Journal of Structural Engineering, 143 (8):1-14
- Chang-Soo Kim and Hyeon-Jong Hwang (2017) Residual Strength of Concrete-encased Steel Angle Columns after Spalling of Cover Concrete, Advances in Structural Engineering and Mechanics, 1-9
- Chang-Soo Kim et al. (2014) Eccentric Axial Load Capacity of High-Strength Steel-Concrete Composite Columns of Various Sectional Shapes, Journal of Structural Engineering, 140 (4): 1-12
- Chang-Soo Kim et al. (2012) Eccentric Axial Load Testing for Concrete-Encased Steel Columns Using 800 MPa Steel and 100 MPa Concrete, Journal of Structural Engineering, 138 (8): 1019-1031
- Hyeon-Jong Hwang et al. (2016) Axial Load and Cyclic Lateral Load Tests for Composite Columns with Steel Angles, Journal of Structural Engineering, 142 (5): 1-11
- Muhammad N. S. Hadi et al. (2018) Behavior of High-Strength Concrete Columns Reinforced with Galvanized Steel Equal-Angle Sections under Different Loading Conditions, Journal of Structural Engineering, 144 (7): 1-18