

# Numerical Simulation of Heat Transfer augmentation in a Rectangular Solar Air Heater Duct

Nilesh Varkute<sup>1</sup>, Bipin B.Mashilkar<sup>2</sup>, Pallavi Khaire<sup>3</sup>, Kamlesh Sasane<sup>4</sup>

Assistant Professor, Mechanical Engineering Department,  
Fr.C. Rodrigues institute of Technology, Vashi  
Navi Mumbai, India 400703

<sup>1</sup>nilesh.varkute@gmail.com

<sup>2</sup>bipinmashilkar@yahoo.com

<sup>3</sup>pallavikhaire@yahoo.com

<sup>4</sup>kamlehsasane75@gmail.com

**Abstract**— The use of an artificial roughness on a surface is an effective technique to improve the rate of heat transfer to fluid flow in the duct of a solar air heater. Inclusion of artificial roughness, however, results in a higher friction factor and consequently higher pumping power is required. Number of roughness elements has been investigated to study the heat transfer and friction characteristics of solar air heater ducts.

A 3 D computational analysis of heat transfer augmentation and flow characteristics due to three different artificial roughness geometries in the form of turbulator, pin-fin and conical fins (conceptual roughness element), on heated wall of rectangular solar air heater duct for turbulent flow (Reynolds number ranges from 3800 to 18000) has been carried out. A new strategy, multiblock is used to create hex mesh for CFD analysis has been studied through this work. Realizable  $k-\epsilon$  turbulence model with enhance wall treatment to capture physics at near wall. This turbulence model selected on the basis of size of cell adjacent to the heated wall. This CFD model is first validated by comparing CFD results with analytical results of smooth duct. Using same CFD model, the analysis is carried out for rough duct with different roughness geometries. The CFD results for enhancement ratio, friction factor ratio and average performance index are compared with the experimental results available in the literature. CFD investigations are carried out on different types of roughness geometries which are used for heat transfer enhancement. It is seen that solar air heater duct roughened by inverted rectangular U-shaped turbulator shows better performance with average heat transfer enhancement 1.568 and friction factor ratio 1.428. However, solar air heater roughened by conical fins is advantages over pin-fin duct, with avg. heat enhancement 1.623 and that of pin-fin is 1.532. The performance index calculated by CFD analysis for turbulator, pin-fin and conical fin ducts are 1.611, 1.376 and 1.418 respectively.

**Keywords**— artificial roughness, solar air heater, turbulator, pin-fin, conical fins, CFD analysis.

## I. Introduction

Solar air heater is special kind of heat exchanger that transforms solar radiant energy into heat Conventional

solar air heater generally consist of an absorber plate with a parallel plate below forming a passage of high aspect ratio through which the air to be heated.

One of the major limitations or problems encountered in solar air heater is poor heat transfer coefficient at the heat transferring surface. When a moving fluid comes in contact with a stationary surface, a thin boundary layer develops adjacent to the wall and in this layer there is no relative velocity with respect to the surface. In a heat exchange process, the near surface layer is called laminar sub layer, viscous sub layer or stagnant film and the heat flow in this layer is covered both by conduction and convection processes. Since thermal conductivity of air is low, the heat flow from the wall to the moving fluid is mainly due to convection which is also low due to less velocity near the surface. Trials are taken to overcome this problem up to some extent by using artificial roughness technique in the present work.

This convective heat transfer coefficient can be increased by providing the artificial roughness on the heat transferring surface [4]. It has been found that the artificial roughness (in the form of interruptions) applied on the heat transferring surface breaks the viscous sub-layer, which reduces thermal resistance and promotes turbulence in a region close to artificially roughened surface. The purpose of providing extended surfaces on the absorber plate of a solar air heater duct is to increase the heat transfer rate and thereby reducing the absorber plate temperature and heat losses to the atmosphere thereby keeping pumping losses as low as possible. The presence of rib may enhance heat transfer because of interruption in the viscous sub-layer, which yields flow turbulence, separation and reattachment leading to a higher heat transfer coefficient. The enhancement of heat transfer by flow separation and reattachment caused by ribs is

significantly higher compared to that by the increased heat transfer area due to ribs (fin-effect).

The present work is based on CFD investigation of heat transfer augmentation in solar air heater duct using different artificial roughness geometries. Literature review reveals that a number of studies were carried out dealing with experimental investigations for finding out the optimum enhancement ratio and friction factor ratio for particular geometries and hence, optimum performance index. At the same time it is observed that computational studies are relatively less. Computational Fluid Dynamics (CFD) simulation must be first validated with standard experimental or analytical data. After validating the CFD model, it can be used for simulation of other geometries which are to be analyzed or investigated. Present study deals with CFD analysis of a smooth duct. CFD results from this analysis are validated with analytical results of smooth air heater duct. Using same CFD model, CFD analysis is to be carried out for different roughness geometries.

CFD investigations of following cases are carried out:

1. Solar air heater duct roughened by Turbulator along with smooth duct
2. Solar air heater duct roughened by pin-fin along with smooth duct
3. Solar air heater duct roughened by conical fin (frustum of cone).

## II. Solar Air Heater Duct Roughened by turbulator

- Pre-processing software: ICFM-CFD
- Mesh type: structured hex (Multi-blocking strategy)
- Number of blocks: 5234
- Total number cell count: 2.78 million
- Quality of mesh: > 0.7

Following solver setting are used in ANSYS-FLUENT

- Solver Type : Segregated and Steady State Solver
- Turbulence Model : k-ε standard turbulence model
- Pressure velocity coupling : SIMPLE
- Discretization method : Second order upwind

The turbulator with pitch  $p = 10\text{mm}$  and roughness height  $e = 0.7\text{ mm}$  are used to create turbulence to enhance the heat transfer from absorber plat. Test duct is roughened by using artificial roughness called turbulator. These turbulators are modeled as integral part of absorber plate

i.e. top wall. The dimension of the duct is  $1240\text{ mm} \times 65\text{ mm} \times 22\text{ mm}$ . The angle of inclination of the turbulator is about  $9^\circ$  so mesh creation on such geometry is challenging

part of the pre-processor. Hex mesh on turbulator duct is generated by using multiblock strategy.

Simulation is carried out for roughened duct to get Nusselt number ( $Nu_r$ ) and friction factor ( $f_r$ ). To achieve this objective the following post-processing is done. The post-processing gives the general idea about the physics in the

Re No	Experimental $Nu_r/Nu_s$	Simulation $Nu_r/Nu_s$	% Deviation in $Nu_r/Nu_s$
3800	2.3882	2.1209	11.19252994
5000	2.7855	2.4532	11.92963561
8000	2.5544	2.4213	5.210616975
12000	2.7535	2.4528	10.92064645
16000	2.8187	2.5612	9.135417036
18000	2.8219	2.5964	7.991069847

Table 1: Deviation of experimental and simulation results

Fig. 1 Plot of Enhancement Ratio ( $Nu_r/Nu_s$ ) vs Reynolds No. ( $Re$ ) for Turbulator Duct.

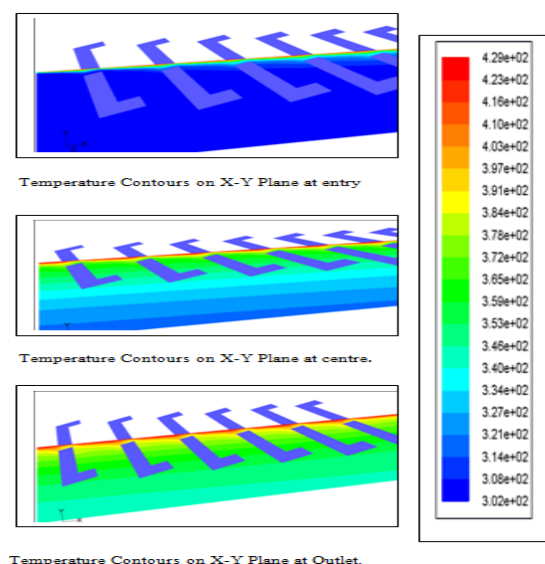
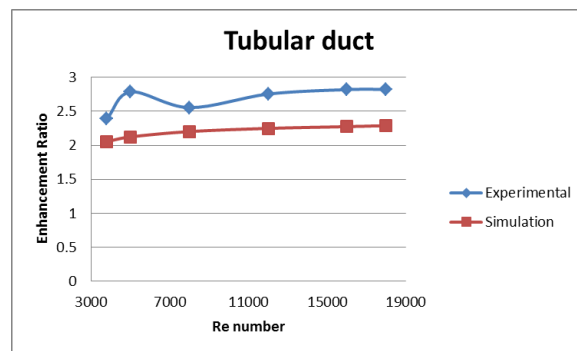


Fig.2: Contour of Temperature at various Location

### III. SOLAR AIR HEATER ROUGHENED BY PIN-FIN

- Pre-processing software: ICEM-CFD
- Mesh type: structured hex (Multi-blocking strategy)
- Number of blocks: 3600
- Total number cell count: 1.70 million
- Quality of mesh: > 0.5

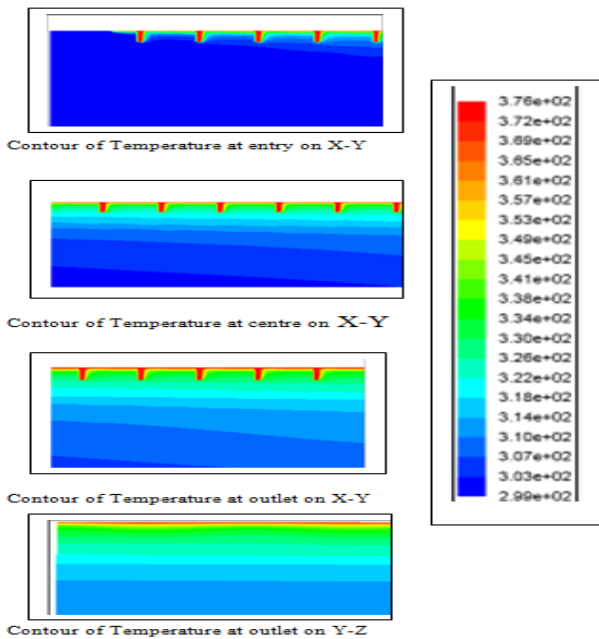


Fig.3:Contour of Temperature at various Location

From the observation tables and plots, it is concluded that CFD results are closely matches with Experimental results with maximum % deviation in Nusselt number and friction factor is 9.12 and 18.30 respectively.

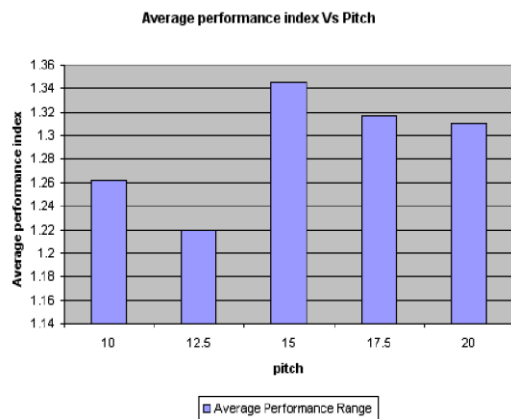
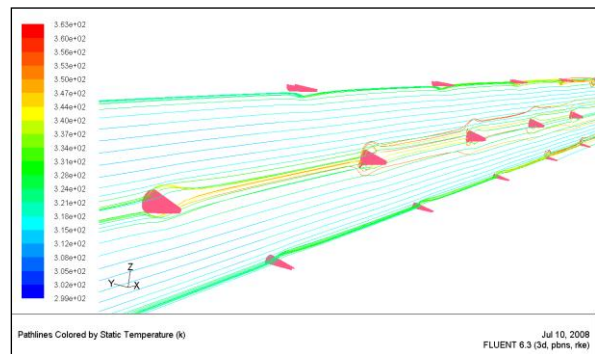


Fig.4: Turbulent Intensity (%) Contour on X-Y Plane (Pin-Fin Duct)

Fig.5: Plot of Average Performance Index vs. Relative roughness pitch



Average performance index for CFD investigation

$$\left[ \frac{Nu_r / Nu_s}{(f_r / f_s)^{1/3}} \right]_{CFD} \text{ is } 1.376 \text{ at pitch } 15.$$

### IV SOLAR AIR HEATER DUCT ROUGHEN BY CONE FINS

CFD Results of Conical Fin Duct are as shown in fig.6 to fig.8.

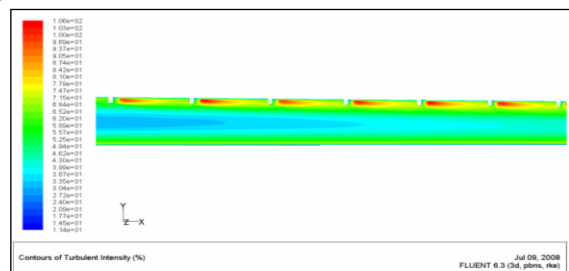


Fig. 6: Turbulent Intensity (%) Contours on X-Z Plane for Conical Fin Duct

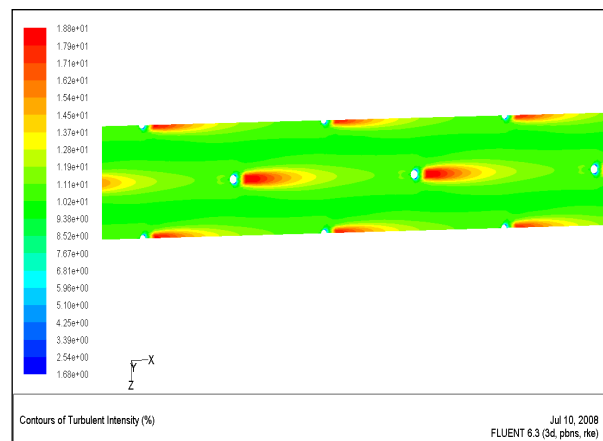


Fig.7: Pathlines Colored by Temperature on X-Z Plane for Conical Fin Duct

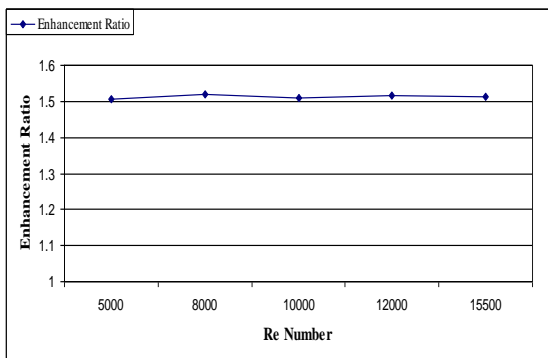


Fig. 8: Plot of CFD Enhancement Ratio (Nur/Nus) vs Re No. for Conical Fin Duct

Average performance index for CFD investigation

$$\left[ \frac{Nu_r / Nu_s}{(f_r / f_s)^{1/3}} \right]_{CFD} \text{ is } 1.418.$$

### V Discussion

The physics of artificial roughness pin-fin attached to the absorber plate is to increase the turbulence in the form of wake. Path lines are drawn in X-Y and X-Z plane to interpret the behavior of fluid flow across the pin-fin. Pressure drop caused due to formation of wake as well as skin friction. From CFD investigation it is seen that maximum enhancement ratio improves to 1.532 with friction factor ratio 1.327. Because of less improvement in enhancement ratio, average performance index is found to be 1.376.

Basic physics of this type of geometry (conical fin) is same as that of pin-fin. Conical fin is advantages over pin-fin in two predicted aspects; 1) flow gets disturbed due to cone shape but wake region found to be less, 2) reduction in skin friction results in less pressure drop.

Table 2: Enhancement Ratio, Friction Factor Ratio and Avg. Performance Index of Three Geometries

	Turbulator duct	Pin-fin duct	Conical duct
$(Nu_r / Nu_s)_{avg}$	1.568	1.532	1.623
$(f_r / f_s)_{avg}$	1.428	1.327	1.384
Avg. performance index	<b>1.611</b>	<b>1.376</b>	<b>1.418</b>

From observation table it is seen that performance of turbulator duct is good as compared to pin-fin and conical duct.

In the view of present analysis the following conclusion are drawn

- The CFD results of turbulator duct are more closely matches with experimental results.
- The average performance index of turbulator duct is higher than that of other two roughened duct which are studied in present work. The physics behind the heat transfer enhancement is due to momentum lift of air caused by attachment of turbulator is clearly understand by pathlines drawn in the domain, which is predicted at the time of experimentation.
- From contour plot of percentage turbulence intensity, it is found that maximum turbulence intensity occurs just under side of the turbulator.
- In case of pin-fin duct and conical fin duct, it is found that there is no reattachment point and momentum lift of fluid which is essential to enhance the heat transfer in the solar air heater, so heat transfer enhancement in pin-fin and conical fin duct is less.
- The conical fin duct (conceptual geometry) gives better performance than that of pin-fin duct. It is found that in case of conical fin duct turbulence created not only weak region (vortex formation) but also by disturbing fluid layer due to conical shape of the fins.

Future scope concern with the 3D CFD analysis of solar air heater are CFD results can be improved by using very fine mesh which is computationally expensive, but problem can solved by using high configuration machine (servers). Artificial roughness on heated plate which are difficult to manufacture, but can be analyzed using CFD approach. Design of roughness geometries can be first optimized by CFD analysis before going for experimentation, which can reduce experimentation time as well as expenses in manufacturing and experimentation. To understand or to find the physics behind heat transfer enhancement for newly innovative geometry, CFD is best tool to visualize it.

### REFERENCES

- [1] S. Ray and A.W. Date, "Presser drop and heat transfer characteristic of flow through square duct with twisted tap insert," International Journal of Heat and Mass Transfer 46, 889-902, 2003.
- [2] R.P. Sani, S.K. Single and Varun, "A review on roughness geometry used in solar air heaters," Solar Energy 81, 1340-1350, 2007.
- [3] J. Nikuradse "Law of flow in rough pipes," NACA, Technical Memorandum 1292. Nov. 1950.
- [4] B.N. Prasad, J.S. Saini, "Effect of artificial roughness on heat transfer and friction factor in a solar air heater," Solar Energy 41 (6), 555-560, 1988.
- [5] M.E. Taslim, L.A. Bondi, D.M. Kercher, "An experimental investigation of heat transfer in an orthogonally rotating channel roughened with 45° Criss-cross ribs on two opposite walls," ASME Journal of Turbomachinery 113, 346-353, 1996.

- [6] R.P. Saini, J.S. Saini, "Heat transfer and friction factor correlations for artificially roughened ducts with expanded metal mesh as roughened element," *International Journal of Heat and Mass Transfer* 40(4), 973-986, 1997.
- [7] K.B. Muluwork, J.S. Saini, S.C. Solanki, "Studies on discrete RIB roughened solar air heater," In: *Proceeding of National Solar Energy Convention, Roorkee*, 75-84, 1998.
- [8] A. Momin, J.S. Saini, S.C. Solanki, "Heat transfer & friction in Solar air heater duct with V shape rib roughness on absorber plate," *International Journal of Heat and Mass Transfer* 45, 3383-3396, 2002.
- [9] R. Karwa, S.C. Solanki, J.S. Saini, "Heat transfer coefficient & friction factor correlation for transition flow region in rib roughened rectangular duct," *International Journal of Heat and Mass Transfer* 42, 1597-1615, 1999.
- [10] J.L. Bhagoria, J.S. Sani, S.C. Solanki, "Heat transfer coefficient and friction factor correlation for rectangular solar air heater duct having transverse wedge shaped rib roughness on the absorber plate," *Renewable Energy* 25, 341-369, 2002.
- [11] S.B. Bopche, "Experimental investigations on heat transfer enhancement in solar air heater by using artificial roughness," A project thesis at Dr B.A.T. University Lonere, Aug. 2007.
- [12] A. Chaube, P.K. Sahoo, S.C. Solanki, "Analysis of heat transfer augmentation and flow characteristics due to rib roughness over absorber plate of a solar air heater," *Renewable Energy* 31, 317-331, 2006.
- [13] C. K. Lee and S. A. Abdel, "Computational Analysis of heat transfer in turbulent flow past a horizontal surface with two dimensional ribs," *Int. Comm. Heat Mass Transfer*, Vol. 28 No.2., 161-17.
- [14] Nilesh Varkute, Bipin Mashilkar, Sanjay Rukhande, Akshay Venegal, Vishal Madhavi, Mayur Karche, Amar Ingle, "Experimentation and Testing of an OP-AMP operated Solar Tracking Mechanism" *IJERT*, Volume 4, Issue 4, 400 to 404, 2015.
- [15] Kiran Deshmukh, Manisha Dhanokar, Nilesh Varkute, T.R.B. Sanjay Kumar, "Numerical simulation of enhancement of heat transfer in a tube with and without rod helical tape swirl generators" *IJMET*, Volume 5, Issue 6, 1-13, 2014.
- [16] Nilesh Varkute, Aditya vaishampayan, Ninad Sonje, Prasad Patil, Kunal Attarde, "Numerical Investigation of Performance of Brake Shoe Liner to Fabricate and Test Modified Design" *IJERT*, Volume 4, Issue 4, 400 - 404, 2015.
- [17] Nilesh Varkute, R.S.Maurya, "CFD Simulation in Township Planning - A Case Study", *IJCER*, Volume 3, Issue 3, 65-72, 2013.
- [18] Bipin Mashilkar, Nilesh Varkute, "Numerical Investigation of Heat Transfer Augmentation in a Rectangular Solar Air Heater Duct" in *IJERT*, Volume 3, Issue 10, 1245 - 1248, 2014.
- [19] Nilesh Varkute, Akshay Chalke, Deepak Ailani, Ritsh Gogade, Ajay Babaria, "Design and Fabrication of a Peltier Operated Portable Air cooling system, *IRJET*, Volum 3, Issua 3, 1801-1805, 2016.