

AI-Driven Intelligent Adaptive Traffic Digital Twin & Optimization System

Mrs. Namratha B S¹, Chethan T D², G Vikas³, Gagan D⁴, Harshith Kumar K⁵

¹Assistant Professor, Dept. of CSE, Jyothy Institute of Technology, Karnataka, India

²Student, Dept. of CSE, Jyothy Institute of Technology, Karnataka, India

³Student, Dept. of CSE, Jyothy Institute of Technology, Karnataka, India

⁴Student, Dept. of CSE, Jyothy Institute of Technology, Karnataka, India

⁵Student, Dept. of CSE, Jyothy Institute of Technology, Karnataka, India

Abstract - The number of people living in cities and the number of vehicles on the road is increasing fast. This has made traffic congestion a big problem in cities. Traditional traffic signal systems usually work on a fixed schedule, which does not change when traffic conditions change. This means people have to wait use more fuel and there is more pollution. In the few years many researchers have tried to use artificial intelligence, machine learning and other techniques to manage traffic better. However many of these approaches only work in simulation. Only focus on one thing, like detecting vehicles or controlling signals.

This paper looks at traffic management systems that use computer vision, predictive analytics and adaptive signal control. It analyzes techniques like using deep learning to detect vehicles reinforcement learning to optimize signals and time-series prediction models. These techniques are compared based on how they work, how well they. What their limitations are. One important thing found in this survey is that most existing systems do not combine real-time processing, predictive modeling and simulation in one framework.

Key Words: Intelligent Traffic Systems, Vehicle Detection, Traffic Prediction, Digital Twin, Adaptive Signal Control, Machine Learning, IoT, Smart City

1. INTRODUCTION

Traffic congestion is a problem in cities that are growing really fast. The number of cars on the road is always going up. The old way of managing traffic is not working very well. Most traffic lights are set to change at fixed times. They do not take into account what is really happening on the road at that moment. This means that some roads have to wait for no reason while others are not being used enough which is not efficient and makes the air dirty.

To fix these problems people are working on traffic systems that can change based on what is happening in real time. In the few years Artificial Intelligence and Machine Learning have made it possible to do new things in this area. Computer vision is used to count cars from videos and predictive models help figure out if there will be traffic

congestion in the future. These approaches are trying to make traffic lights work better.

Another important thing that is happening in this area is the use of Internet of Things devices to control and talk to traffic lights in time. Small computers like ESP32 let software talk directly to traffic lights so they can be controlled based on what the data says. Also simulation tools and digital twin technologies are becoming popular because they show what real traffic systems are like. These models help people understand what might happen in traffic situations like when it is busy or if something unexpected happens without affecting the real traffic.

With all these new things many systems only focus on one part of traffic management like detecting cars or predicting congestion and they are often only tested in fake environments. There needs to be a system that puts together real-time detection, prediction, control and simulation in one.

This paper looks at different smart traffic management techniques and talks about what is good and bad about them. Based on what we found out we are talking about a way to combine Artificial Intelligence to detect cars Machine Learning to predict congestion, Internet of Things to control traffic lights and a digital twin model to simulate and visualize traffic. The goal is to make a smarter and more flexible solution, for managing traffic in modern cities.

2. LITERATURE REVIEW

2.1 Vehicle Detection and Counting

A learning approach to detect and count vehicles in transportation systems was studied[3]. This approach is very important for traffic management. The researchers focused on improving traffic monitoring. They used images from cameras and aerial sources to do this. Their method involved stages: vehicle detection using advanced deep learning models was done, and counting and classification techniques were also used. The system accurately identified cars, buses and trucks. It worked well with these types of

vehicles. However it relied on a dataset. This may affect its real-time use in traffic environments.

2.2 Reinforcement Learning for Traffic Signal Control

Researchers explored using reinforcement learning. They wanted to improve traffic flow at intersections. They controlled traffic signals with agents. These agents made decisions based on real-time traffic conditions like queue length and vehicle density [5]. Two strategies were implemented: selecting signal phases was one strategy, and adjusting signal duration dynamically was the other. The system was tested under traffic scenarios. These scenarios included low traffic conditions. Although results showed traffic flow the approach was mainly evaluated in simulation environments. It was limited to an intersection setup.

2.3 Q-Learning Based Traffic Signal Control

A study on traffic signal control used a network-based Q-learning method. This method handled urban traffic scenarios. The model considered traffic parameters. These parameters included vehicle position, speed and direction. They helped determine signal actions. The system performed under varying traffic patterns. These patterns included peak hour conditions [2]. However similar to approaches this method was tested only in simulation. It did not address real-world deployment challenges. Coordination between intersections was also not considered.

2.4 IoT-Based Traffic Management Systems

IoT-based traffic management systems were explored. These systems enabled communication between traffic monitoring units. They also communicated with physical signal controllers. These systems used microcontrollers and sensors. They collected traffic data and controlled signal operations [6]. While such approaches improved responsiveness they often lacked prediction capabilities. They were limited in scalability when applied to urban environments.

2.5 Traffic Prediction Using Machine Learning

Several researchers investigated machine learning techniques. These techniques were used for traffic prediction. Time-series models and Long Short-Term Memory (LSTM) networks analyzed traffic patterns. They forecasted congestion levels. These models helped in traffic management [4]. They allowed systems to anticipate traffic conditions in advance. Despite their effectiveness most approaches operated independently. They were not integrated with real-time traffic control mechanisms.

3. RESEARCH GAP

The field of traffic management has seen a lot of progress, when you look at the research that has been done you can see that most of it only solves one part of the problem. For instance some studies have used learning to detect and count vehicles while others have used reinforcement learning to control traffic signals. These approaches work well on their own. They do not work well with other important parts of traffic management systems. One big problem with the systems that have been proposed is that they are only tested in environments. Simulation tools are useful for seeing how well a system works. They do not really show what happens in the real world. This makes it hard to actually use these systems especially when you are dealing with traffic that's hard to predict and environmental factors that can affect traffic.

Most of the research that has been done only looks at what happens at one intersection. In real life there are many intersections that are connected and the signals need to work together to keep traffic moving. The systems that have been proposed do not work well with intersections so they are not good for big cities. It is also worth noting that not many studies use traffic prediction techniques to control traffic signals in time. In cases the prediction models are separate and do not directly affect how the signals are controlled. This means that the traffic management system is not as good as it could be.

The use of twin technology in traffic systems is also not very common. A few approaches provide a virtual representation of what is happening in real time which can be used to simulate and analyze traffic. This is important for understanding how traffic works and for testing scenarios without affecting actual traffic. So there is a need, for a system that combines different things, including detecting vehicles in real time predicting traffic controlling signals using IoT technology and simulating traffic with digital twins. If we can fill in the gaps we can create traffic management systems that're more efficient work better and are more intelligent which is what modern smart cities need.

4. PROPOSED SYSTEM

The traffic management systems we have now are not good enough. So we made a system called TRINETRA. It is a system that uses Artificial Intelligence and other technologies like Machine Learning and Internet of Things to manage traffic

TRINETRA uses cameras to watch the traffic in time. It takes videos of the traffic. Uses computer vision to see how many cars are on the road. It can even tell how many cars are in each lane. This helps us know what the traffic is like now.

TRINETRA can also guess what the traffic will be like in the future. It uses models like linear regression and Long Short-Term Memory networks to look at traffic patterns and predict if there will be traffic jams. This means TRINETRA can make decisions before the traffic gets bad.

The system can also change the traffic lights to make the traffic flow better. It does not use a fixed schedule for the lights. Instead it looks at how many cars are on the road and how bad the traffic will be and then it decides how long the green light should be. This helps the roads with a lot of traffic get time so people do not have to wait as long.

TRINETRA uses devices like ESP32 microcontrollers to control the traffic lights. These devices get instructions from the system. Then they make the traffic lights work. One cool thing about TRINETRA is that it has a twin. The digital twin is like a copy of the traffic intersection but it is on a computer. It always has the information so we can see what the traffic is like now guess what it will be like later and even pretend there is a traffic jam to see what would happen.

We also made a website that shows all the information about the traffic. It shows how many cars are on the road how bad the traffic is and what the traffic lights are doing. This makes it easy to watch and control the system.

So TRINETRA is a system that tries to make traffic management better by using a lot of technologies together. It can detect traffic guess what will happen control the traffic lights and even simulate traffic scenarios. This should make the traffic, in cities better. TRINETRA is a solution because it is a complete system that can be used in many places.

5. METHODOLOGY / SYSTEM ARCHITECTURE

The traffic management system is made up of parts and each part does a specific job. All these parts work together to manage traffic in a way. The whole process starts with collecting data. Then goes through many steps like processing, predicting, controlling and visualizing.

First the system uses a camera to get real-time traffic data. The video from the camera is then processed using computer techniques. A special model called YOLO is used to find vehicles in each frame of the video. The system then counts the vehicles. Figures out how dense the traffic is in each lane. This information is used for analysis.

When the system has the traffic data it is sent to the traffic analysis part. This is where the system checks how congested the traffic is and puts it into categories like low, medium or high. This helps the system understand what is going on at the intersection and makes it easier to decide when to change the traffic signals.

The next part of the system is the prediction part, which's very important for managing traffic. The system uses models like linear regression and LSTM networks to look at past and current traffic data. Based on this the system predicts what the traffic will be like in the future. This means the system can make decisions before things happen than just reacting to what is happening now.

After predicting the traffic the system decides when to change the traffic signals. The system changes the timing of the lights based on how dense the traffic is and what it predicts will happen. Roads with a lot of traffic get longer green lights and roads with traffic get shorter green lights. This helps reduce waiting time and makes the traffic flow better. The IoT control part of the system makes sure the decisions are put into action. Special tiny computers like ESP32 are used to control the traffic lights based on the systems decisions. These devices allow the software and hardware to talk to each other in time so the system can control the traffic lights accurately.

The digital twin part of the system is also very important. It creates a copy of the traffic intersection that updates in real-time. This allows the system to show what is happening now what might happen in the future and how the system is working. It also allows the system to simulate situations, like very busy traffic or unexpected problems, which helps with analysis and planning. Finally the system has a web-based dashboard that shows all the information in a way that's easy to understand. The dashboard shows live traffic data, traffic density, signal status and prediction graphs. This allows users to see how the system is working and understand traffic patterns.

In terms of the traffic management system has many parts that work together to manage traffic in a smart way. These parts include detecting traffic, analyzing traffic, predicting traffic, optimizing traffic signals as well as controlling traffic lights and simulating traffic scenarios.

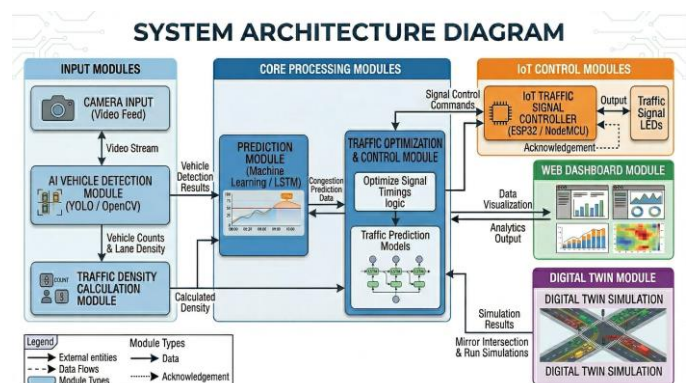


Fig -1: System Architecture

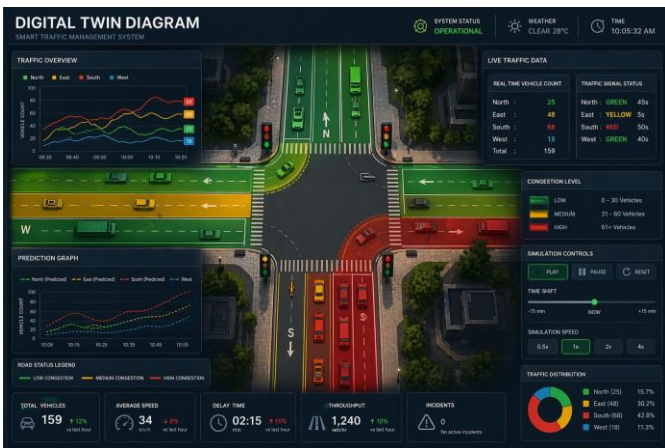


Fig-2: Digital Twin

6. CONCLUSION

This paper looks at the ways we manage traffic with intelligent systems. It talks about things like finding vehicles controlling traffic lights and guessing how bad traffic will be. When we look at what other people have done we see that even though they have made some progress using artificial intelligence and machine learning most of their systems only look at one part of traffic management and are usually only tested in simulated environments. To get past these problems we talk about a way of doing things with the TRINETRA system. This system puts together real-time vehicle detection, traffic prediction optimizing traffic lights using IoT devices and simulating traffic with a twin. By combining all these parts the new system wants to give us a smarter way to manage traffic in cities. The digital twin model makes the system better because it lets us see and simulate traffic in time which helps us make better decisions. Also using IoT devices lets us actually control traffic lights in time which makes the system work better in the real world.

In the future we can make the system work with intersections that are connected so we can manage traffic in a bigger area. We can also make it better by using advanced machine learning models working with smart city systems and making sure emergency vehicles get priority. Overall the new way of doing things can help us make transportation systems that're smarter adapt better and are more sustainable. The TRINETRA system is a part of this because it combines vehicle detection, traffic prediction and traffic light optimization in one place making traffic management more efficient.

7. ACKNOWLEDGEMENT

The authors would like to express their sincere gratitude to Mrs. Namratha B S, Assistant Professor, Department of Computer Science and Engineering, for her continuous guidance, valuable suggestions, and encouragement

throughout the development of this work. Her support played an important role in shaping the direction and quality of this study.

The authors also extend their thanks to the Department of Computer Science and Engineering, Jyothy Institute of Technology, for providing the necessary resources and environment to carry out this work successfully.

Finally, the authors would like to acknowledge the support and cooperation of all team members, whose collective effort and coordination made the completion of this work possible.

8. REFERENCES

- [1] B. Shrestha, B. Singh, G. Darlami, and N. Upadhayaya, "AI Based Traffic Management System," *International Journal of Educational Practices and Engineering*, vol. 2, no. 1, 2025.
- [2] M. Guo, P. Wang, and C. Y. Chan, "A Reinforcement Learning Approach for Traffic Signal Control at Urban Intersections," 2019.
- [3] A. Vikram, J. Akshya, S. Ahmad, L. J. Rubini, S. Kadry, and J. Kim, "Deep Learning Based Vehicle Detection and Counting System for Intelligent Transportation," *Computer Systems Science and Engineering*, 2023.
- [4] I. Khan, M. M. Hasan, M. S. Islam, M. S. Reza, M. T. Reza, and E. T. Efaz, "Adaptive Traffic Signal Control System Using Object Detection Based Approach," 2023.
- [5] M. T. Rafique, A. Mustafa, and H. Sajid, "Adaptive Traffic Signal Control Using Reinforcement Learning," 2022.
- [6] S. S. Bhise, "An IoT Application in a Smart Traffic Management System," *Journal for Research in Applied Sciences and Biotechnology*, vol. 4, no. 1, 2025.
- [7] A. Gaur, A. Mavi, B. Tyagi, and N. Anwar, "Dynamic Traffic Light Management System using AI and ML," *IJERCSE*, vol. 11, no. 4, 2024.
- [8] T. V. D. Jain, M. N, and S. K. C, "Machine Learning-Based Adaptive Traffic Signal System," *International Journal of Research Publication and Reviews*, vol. 5, no. 11, 2024.
- [9] P. A. Mandhare, V. Kharat, and C. Y. Patil, "Intelligent Road Traffic Control System for Traffic Congestion: A Perspective," *International Journal of Computer Sciences and Engineering*, vol. 6, no. 7, 2018.
- [10] M. Sharma, A. Bansal, V. Kashyap, P. Goyal, and T. H. Sheikh, "Intelligent Traffic Light Control System Based on Traffic Environment Using Deep Learning," *IOP Conference Series: Materials Science and Engineering*, vol. 1022, 2021.

[11] L. Sumia and V. Ranga, "Intelligent Traffic Management System for Prioritizing Emergency Vehicles in a Smart City," *International Journal of Engineering*, vol. 31, no. 2, 2018.

[12] R. Kumar, "AI-Based Adaptive Traffic Signal Control for Congestion Mitigation," *International Journal of Modern Science and Research Technology*, vol. 3, no. 4, 2025.

[13] H. Khan and J. S. Thakur, "Smart Traffic Control: Machine Learning for Dynamic Road Traffic Management in Urban Environments," *Multimedia Tools and Applications*, 2025.