

Nexus- The Focus Zone: AI-Powered Productivity and Focus Management System

Harsh Agarwal¹, Sofiya Salmani², Sairaj Khanvilkar³, Pranjal Parab⁴, Shaurya Singh⁵

¹Diploma Student, Department of Computer Engineering, Thakur Polytechnic, Kandivali East-400101

² Diploma Student, Department of Computer Engineering, Thakur Polytechnic, Kandivali East-400101

Abstract - In the modern digital world, maintaining concentration and productivity has become increasingly challenging due to continuous exposure to distractions such as social media, notifications, and multitasking environments. This paper introduces Nexus – The Focus Zone, an AI-powered web-based productivity system designed to enhance user focus, improve time management, and provide intelligent assistance through integrated features. The system includes Focus Mode Pro for distraction-free work sessions, an AI Assistant for real-time query resolution, an Analytics Dashboard for performance tracking, a Reward System for motivation, and advanced modules such as Smart Goals, Smart Calendar, AI Voice Assistant, and Smart Profile Management. By combining these features into a single platform, the system provides a comprehensive solution for productivity enhancement. The proposed system is suitable for students, professionals, and general users aiming to improve their efficiency and achieve their goals effectively.

Key Words: Productivity System, Artificial Intelligence, Focus Mode, Smart Goals, Analytics Dashboard, Voice Assistant, Web Application

1. INTRODUCTION

In today's fast-paced digital environment, individuals are constantly exposed to various distractions that significantly reduce their productivity and efficiency. With the increasing use of smartphones, social media platforms, and online applications, maintaining focus on a single task has become a major challenge. This results in poor time management, decreased performance, and lack of goal achievement. assistance into a single system. To overcome these challenges, productivity management systems have been developed; however, most existing solutions focus only on a single aspect such as task management or time tracking. There is a need for an integrated system that combines multiple functionalities into a unified platform. Nexus – The Focus Zone is designed as an all-in-one productivity system that integrates focus tracking, AI assistance, goal management, and performance analytics. The system aims to provide users with a distraction-free environment while offering intelligent tools to support their daily activities. By leveraging Artificial Intelligence and modern web technologies, the system enhances user

engagement and promotes efficient work habits.

2. SYSTEM FEATURES:

2.1 Focus Mode Pro

Focus Mode Pro is the core feature of the system, designed to create a distraction-free working environment. Users can initiate a focus session by setting a timer according to their preference. During the session, unnecessary interruptions are minimized, allowing users to concentrate on their tasks effectively. Additionally, the system incorporates a camera-based monitoring mechanism that observes user activity and determines whether the user is focused on the task. This ensures accountability and improves discipline among users. The feature is particularly beneficial for students and professionals who require uninterrupted work sessions.



Fig. 1- Focus Mode Pro

2.2 AI Assistant Pro

The AI Assistant Pro acts as an integrated chatbot within the system. It allows users to ask questions and receive accurate, concise, and real-time responses. This eliminates the need to switch between multiple applications or platforms for information.

The assistant enhances user productivity by providing quick solutions, explanations, and suggestions, making it a valuable tool for learning and problem-solving.

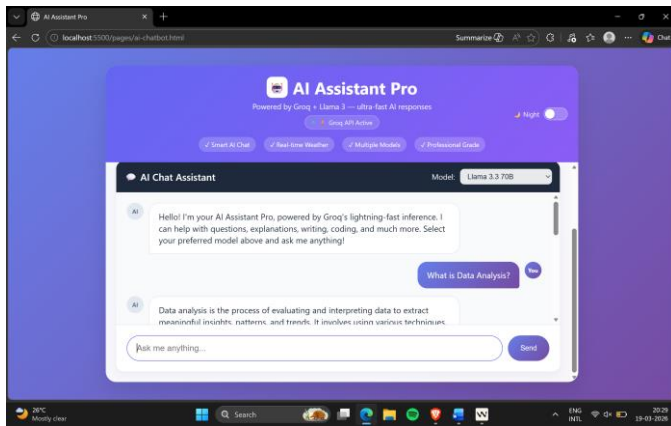


Fig. 2- AI Assistant chatbot through an api key

2.3 Analytics Dashboard

The Analytics Dashboard provides detailed insights into user activity and performance. It tracks metrics such as the number of sessions completed, time spent on tasks, and overall productivity score.

The data is presented using graphs and visual elements, enabling users to analyze their progress and identify areas for improvement. This feature helps in maintaining consistency and achieving long-term goals.

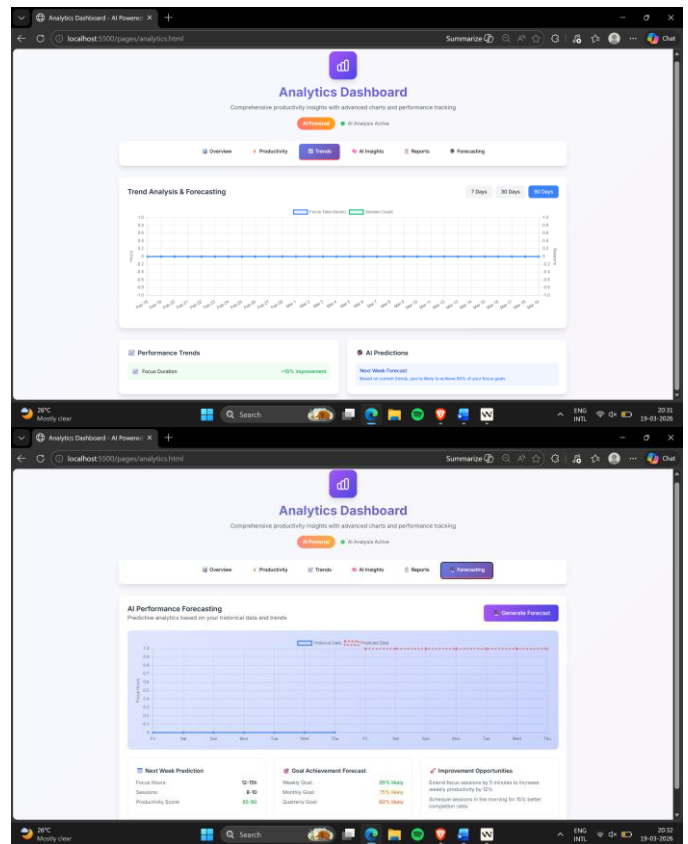
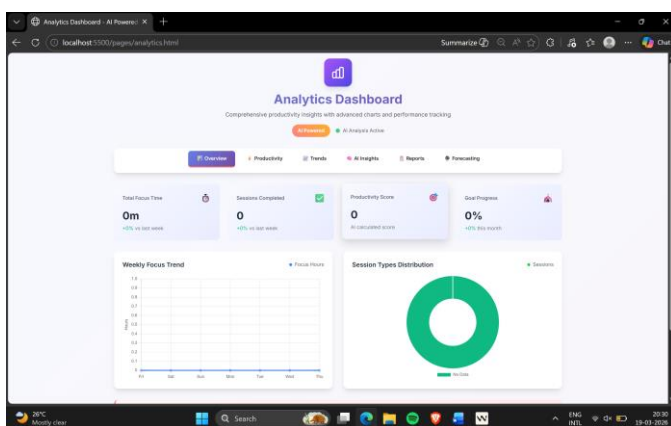
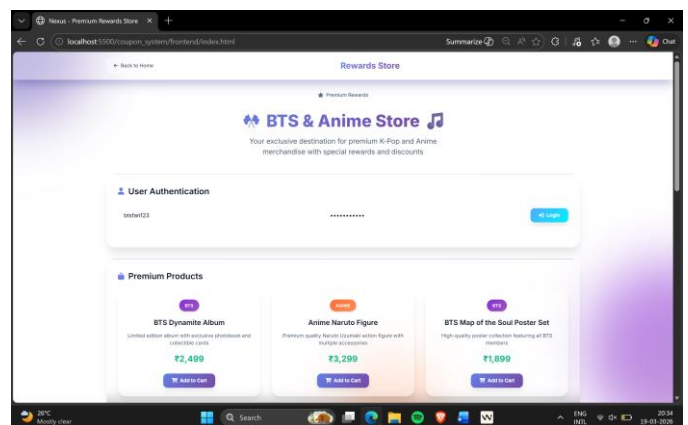


Fig. 3- Dashboard to show how much you used the session

2.4 Rewards System

The Reward System is designed to motivate users by providing incentives for completing focus sessions. Users receive points, badges, or rewards based on their performance and consistency.

This gamification approach encourages users to maintain discipline and improve their productivity over time.



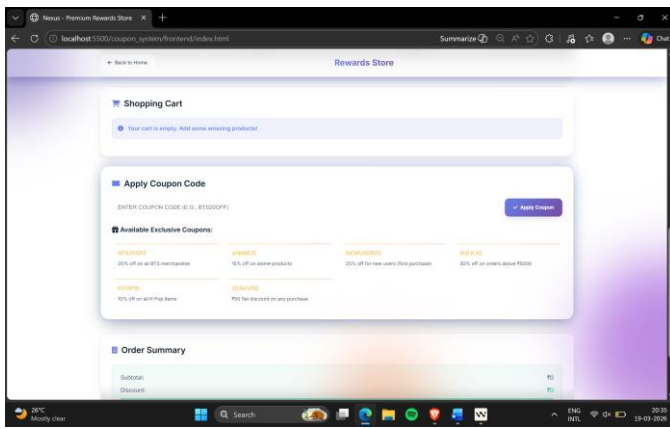


Fig. 4- Rewards after session gets completed

2.5 AI Voice Assistant

The AI Voice Assistant allows users to interact with the system using voice commands. It supports multiple languages such as German, French, Spanish, and Chinese, making the system accessible to a wider audience. This feature enhances user convenience and enables hands-free interaction, especially useful in multitasking scenarios.

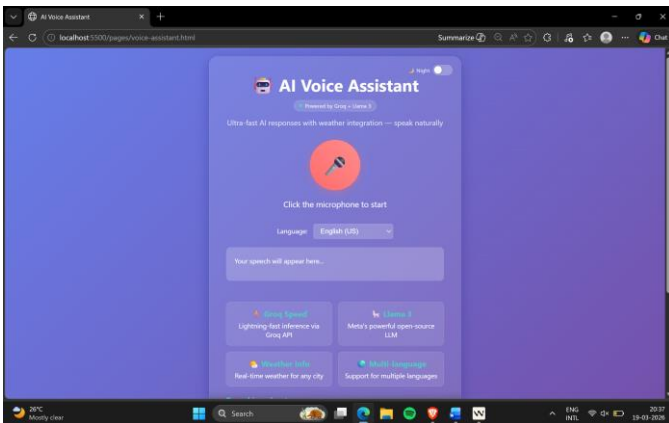


Fig. 5- AI Voice Assistant that predicts the answer through voice & text

2.6 Smart Goals

The Smart Goals module allows users to define and track their personal and professional goals. Users can input details such as goal title, description, category, deadline, and priority level. The system also enables users to update their progress, ensuring continuous monitoring and achievement of objectives.

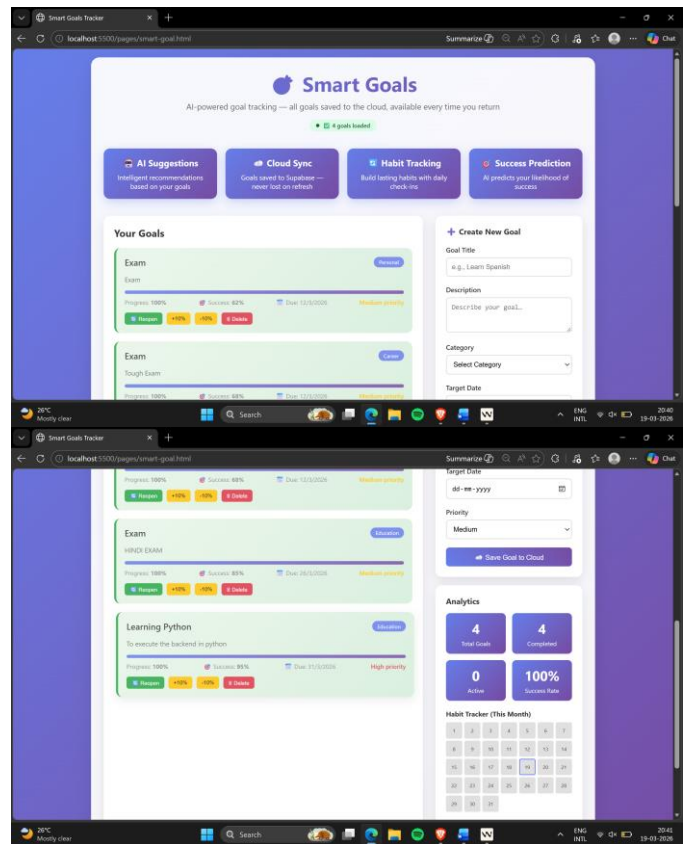


Fig. 6- Smart Goals for setting a goal and completing your focus per day

2.7 Smart Calendar

The Smart Calendar feature helps users manage their time effectively by scheduling events and setting reminders. Users can add tasks such as exams, meetings, or daily routines, and receive timely notifications. This feature ensures that users stay organized and do not miss important activities.

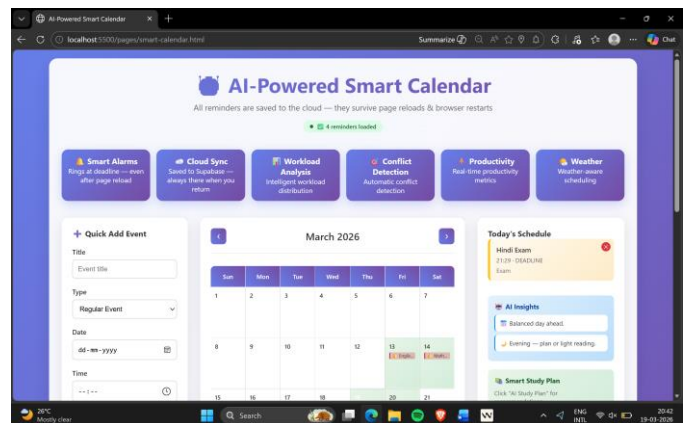


Fig. 7- Smart Calendar to add the events

2.8 Smart Profile System

The Smart Profile system stores user information including personal details, skills, preferences, and goals. This data is used to provide personalized insights and recommendations.

The system enhances user experience by adapting to individual needs and improving overall efficiency.

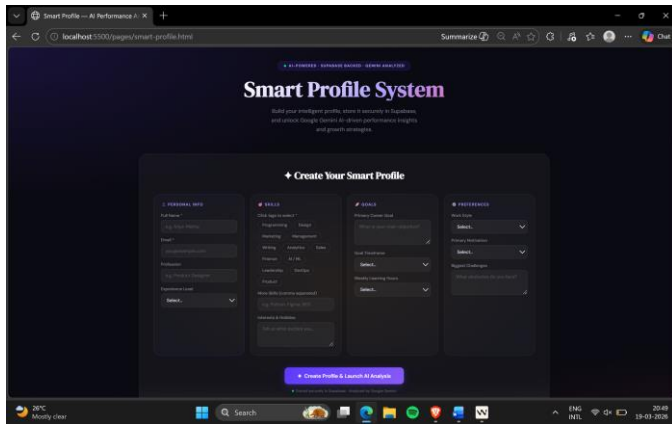


Fig. 8- A Smart Profile to add his passion, hobbies, skills, also future scopes

3. METHODOLOGY

The development of *Nexus – The Focus Zone* follows a structured and systematic software development approach to ensure efficiency, reliability, and scalability. The methodology consists of multiple stages including requirement analysis, system design, implementation, testing, and deployment.

3.1. Requirement Analysis:

In this phase, the requirements of the system are identified and analyzed. The main objective is to understand user needs such as focus management, task scheduling, and productivity tracking. Functional requirements include features like focus mode, AI assistant, analytics dashboard, and smart goals, while non-functional requirements include performance, usability, and security.

3.2. System Design

The system is designed using a modular architecture, where each feature is developed as an independent module. This approach improves maintainability and scalability. The design phase includes:

- UI/UX design for user interaction
- Database schema design for storing user data
- System architecture planning

3.3 Frontend Development

Swarm robots has a bright future ahead of it, since developments are anticipated to greatly increase its capabilities and broaden its range of applications. Swarm robots will become increasingly intelligent, autonomous, and adaptive as machine learning, artificial intelligence, and edge

3.4 Backend Development

The backend is responsible for handling application logic, API integration, and data processing. It manages user authentication, session handling, and communication between the frontend and database. The backend ensures that all features work efficiently and securely.

3.5 Database Management

The database is used to store all user-related information such as:

- User profiles
- Focus session data
- Goals and progress
- Analytics and performance metrics

Efficient database design ensures quick data retrieval and secure storage.

3.6 Implementation

In this phase, all modules are developed and integrated step-by-step. Each feature such as focus mode, AI assistant, and smart calendar is implemented individually and later combined to form the complete system.

3.7 Testing and Debugging

The system undergoes thorough testing to identify and fix errors. Various types of testing are performed:

- Functional testing
- Performance testing
- User acceptance testing

Debugging ensures that the system works smoothly without errors.

3.8 Deployment

After successful testing, the system is deployed for user access. The final product is made available as a web application, ensuring easy accessibility for users.

4. APPLICATIONS

Nexus – The Focus Zone has a wide range of applications across different domains due to its versatile features.

4.1 Education Sector

The system helps students maintain focus during study sessions by reducing distractions and providing structured learning support. Features like focus mode and AI assistant assist students in understanding concepts and improving academic performance.

4.2 Corporate Environment

In professional settings, the system helps employees manage tasks, track productivity, and meet deadlines efficiently. The analytics dashboard allows organizations to monitor performance and improve workflow management.

4.3 Personal Development

The platform supports individuals in setting and achieving personal goals. Features like smart goals and reward systems help users build positive habits and stay motivated.

4.4 Time Management

The smart calendar and scheduling features help users organize their daily activities effectively. Reminders and notifications ensure that important tasks are not missed.

4.5 Remote Work and Freelancing

The system is highly useful for remote workers and freelancers who need to maintain discipline and manage time independently.

4. ADVANTAGES & DISADVANTAGES

5.1 Advantages

1. Improved Focus and Productivity

The focus mode reduces distractions and helps users concentrate on their tasks, leading to increased efficiency.

2. AI-Based Assistance

The integrated AI assistant provides quick and accurate responses, saving time and enhancing learning.

3. All-in-One Platform

The system combines multiple features such as task management, analytics, and AI tools into a single platform, eliminating the need for multiple applications.

4. User-Friendly Interface

The simple and intuitive interface ensures that users can easily navigate and use the system without difficulty.

5. Real-Time Tracking and Analysis

The analytics dashboard provides real-time insights into user performance, helping them improve continuously.

6. Motivation through Rewards

The reward system encourages users to stay consistent

and achieve their goals.

5.2 Disadvantages

1. Internet Dependency

The system requires an active internet connection, which may limit accessibility in offline environments.

2. Privacy Concerns

Camera-based monitoring in focus mode may raise privacy concerns among users if not handled securely.

3. Initial Learning Curve

New users may take some time to understand and adapt to all features of the system.

4. System Complexity

Integrating multiple features into a single platform increases system complexity, which may require proper maintenance.

5. FUTURE SCOPE

The system can be further enhanced by incorporating advanced technologies and additional features.

6.1 Advanced AI Integration

Future versions can include more advanced AI models for personalized recommendations, predictive analysis, and intelligent suggestions.

6.2 Mobile Application Development

Developing a mobile application will increase accessibility and allow users to use the system on smartphones and tablets.

6.3 Facial Recognition for Focus Tracking

Improved facial recognition technology can be integrated to enhance focus monitoring accuracy.

6.4 Enhanced Data Visualization

Advanced graphs and reports can be added to provide deeper insights into user performance.

6.5 Cloud Integration

Cloud-based storage and processing can improve scalability and allow users to access data from anywhere.

6.6 Integration with Wearable Devices

Future systems can integrate with smartwatches or fitness bands to monitor user activity and productivity.

6. CONCLUSION

Nexus – The Focus Zone is an innovative and comprehensive solution designed to address the growing challenges of productivity and time management in the digital age. By integrating focus management, artificial

intelligence, and smart planning tools, the system provides a unified platform that enhances user efficiency and engagement.

The system not only helps users reduce distractions but also encourages disciplined work habits through features like reward systems and analytics tracking. Its adaptability and user-friendly design make it suitable for a wide range of users, including students, professionals, and individuals focused on personal development.

With further advancements and improvements, the system has the potential to become a powerful productivity tool that significantly impacts how individuals manage their time and achieve their goals.

8. REFERENCES

[1] A.S. Tanenbaum, Computer Networks, 2nd Edition, Prentice Hall of India

[2] Stuart Russell and Peter Norvig, Artificial Intelligence: A Modern Approach, Pearson

[3] MDN Web Docs, "HTML, CSS, and JavaScript Documentation," Available: <https://developer.mozilla.org>

[4] Research Papers on Productivity Systems and AI Assistants, IEEE and Springer Journals