

DATA ANALYTICS & VISUALIZATION WITH AI GUIDANCE

J. Ramesh¹, Dudala Amulya², J. Aishwarya³, G. Ravi Kumar⁴, E. Anjini Kumar⁵

¹²³⁴⁵Department of Information Technology, TKR College of Engineering and Technology, Telangana, India

Abstract – *Analytics Edge is a secure, user-friendly, cross-platform application designed to simplify data visualization, analytics, and learning. Built using the MERN stack, Python, and Power BI, it integrates cybersecurity, dynamic data dashboards, and an AI-powered chatbot to guide users in understanding data analysis and visualization. The platform empowers individuals with no coding knowledge, students, and professionals to make informed decisions by providing real-time insights and personalized learning paths, all while ensuring robust data security.*

Analytics Edge is an intelligent and secure cross-platform application designed to integrate Data Visualization (DV), Data Analytics, and Cybersecurity into a unified environment. Built using the MERN stack, Python, and Power BI, the platform provides users with real-time data insights, interactive dashboards, and guided learning experiences. The system addresses the growing challenge of helping individuals and organizations interpret and utilize data effectively. It features an AI-powered chatbot that assists users in understanding analytics concepts, visualization techniques, and decision-making strategies. The app's architecture emphasizes data security, employing measures such as JWT authentication, encryption, and DevSecOps practices with Docker and CI/CD pipelines to ensure scalability and protection.

By combining educational resources with analytical capabilities, Analytics Edge empowers users from students to professionals to make informed, data-driven decisions. Its applications extend across multiple domains, including education, business intelligence, healthcare, and administration. Ultimately, the platform promotes data literacy, enhances analytical thinking, and bridges the gap between data comprehension and actionable insights.

Key Words: Cross platform, MERN stack, Personalized learning paths, Robust, Analytics concepts, Visualization techniques, Decision making strategies, JWT authentication, Encryption, DevSecOps, Docker, CI/CD pipelines.

1. INTRODUCTION

Analytics Edge is a secure, intelligent cross-platform application that integrates Cybersecurity, Data Visualization (DV), and Data Analytics technologies. Built using MERN stack, Python, and Power BI, the application operates on both web and mobile platforms. Analytics Edge empowers users to not only visualize and secure data but also to

analyze and learn from it. A built-in learning chatbot guides users in understanding analytics concepts and DV methods, making them capable of making data-driven decisions in both personal and official contexts. It is an intelligent, secure, and interactive cross-platform application that seamlessly integrates Cybersecurity, Data Visualization (DV), and Data Analytics technologies into a single unified environment.

The platform is built using modern and scalable technologies such as the MERN stack (MongoDB, Express.js, React.js, Node.js), Python, and Power BI, and is accessible via both web and mobile interfaces. Analytics Edge enables users to not only visualize their data through dynamic dashboards and graphical insights but also to analyze it for deeper understanding and decision-making.

One of the standout features of Analytics Edge is its AI-powered learning chatbot, designed to assist users in understanding analytics concepts and visualization techniques. This makes the platform not just a data tool, but also an educational and self-learning system. The chatbot guides users through complex analytics workflows, helping even non-technical users gain confidence in handling and interpreting data.

Furthermore, the platform emphasizes security and privacy, ensuring that all data interactions are protected using advanced cybersecurity mechanisms such as JWT authentication, data encryption, and secure APIs. DevSecOps practices, including Docker containerization and CI/CD pipelines, enhance system reliability, scalability, and automation.

By combining analytics, visualization, and learning under a secure umbrella, Analytics Edge empowers users—from students to business professionals—to become more data-literate and capable of making informed, data-driven decisions. Its cross-domain applicability across education, business intelligence, healthcare, and administration makes it a versatile and impactful platform in the modern digital ecosystem.

1.1 Motivation and Problem Overview

In today's data-driven world, organizations and individuals generate vast amounts of data, yet many lack the tools to effectively visualize and analyse it. Traditional data platforms often require advanced technical skills, limiting accessibility for non-experts. Moreover, security concerns and the absence of integrated learning resources hinder widespread adoption.

Existing systems frequently separate visualization from analytics, leading to fragmented workflows and inefficient decision-making. Centralized platforms may also suffer from scalability issues and vulnerability to cyber threats, especially in sectors like healthcare and education where data privacy is paramount.

The motivation for AnalyticsEdge stems from the need for an all-in-one solution that democratizes data handling. By incorporating AI guidance, the platform addresses the skills gap, while robust cybersecurity measures build trust. This approach not only streamlines data processes but also promotes continuous learning, enabling users to derive actionable insights without external dependencies.

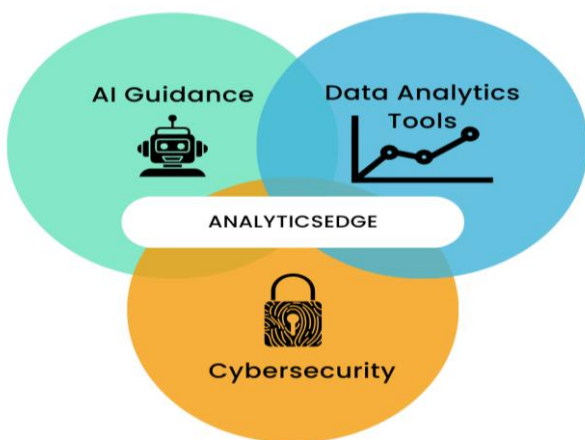


Fig -1: Conceptual overview of integrated data visualization and analytics with AI guidance in Analytics Edge

2. PROPOSED SYSTEM

The proposed Analytics Edge is a comprehensive, integrated platform designed to facilitate data analytics, visualization, and AI-driven educational guidance without relying on blockchain or external decentralized technologies. It allows users to upload datasets (e.g., CSV, Excel, JSON), perform in-depth analyses, generate interactive visualizations, and receive personalized support through an AI chatbot—all within a secure, user-centric environment.

Built on the MERN stack for robust full-stack capabilities, the system incorporates Python for advanced analytics processing and Power BI for professional-grade reporting. Cross-platform compatibility is achieved via React Native, ensuring seamless functionality on web browsers, iOS, and Android devices. The architecture prioritizes modularity, enabling easy extensions for future features like additional ML algorithms or third-party integrations.

Unlike traditional data tools that focus solely on visualization or analytics, AnalyticsEdge combines these with an educational layer, making it ideal for beginners (e.g., students

learning data science) and experts (e.g., professionals in business analytics). Security is embedded at every level, with no intermediaries required, promoting direct, efficient user-data interactions.

2.1 System Architecture

The architecture of AnalyticsEdge is layered to promote separation of concerns and scalability. The presentation layer consists of the web frontend (React.js) and mobile app (React Native with Expo), providing intuitive interfaces for data upload, dashboard viewing, and chatbot interaction. Shared components, such as authentication modules, are reused across platforms to maintain consistency.

The application layer, built on Express.js and Node.js, manages business logic, including API endpoints for data processing and user management. It acts as a bridge to the Python analytics microservice, which runs FastAPI for efficient handling of analytical requests. The data layer utilizes MongoDB for persistent storage of user profiles, dataset metadata, and session data, with cloud integration for scalability.

The security layer permeates all components, incorporating JWT for token-based authentication, OAuth2 for third-party integrations, and encryption for data at rest and in transit. DevOps tools like Docker compose services for local development, while CI/CD pipelines automate testing and deployment.

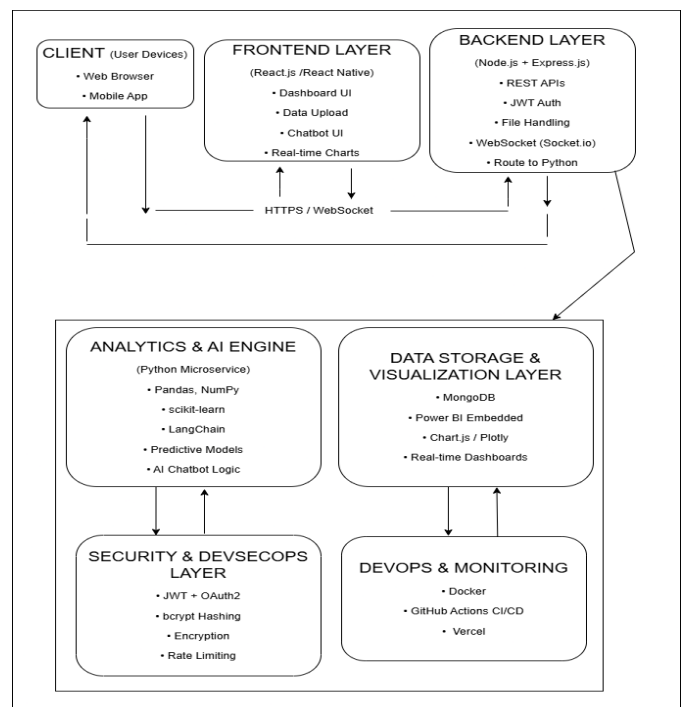


Fig -2: System architecture of AnalyticsEdge integrating MERN, Python, and Power BI.

2.2 AI Chatbot and Visualization Design

The AI-powered chatbot is a central feature, designed using Python with NLP libraries (e.g., spaCy) and LangChain for chaining prompts and responses. It processes user queries via natural language, providing explanations, code snippets, or step-by-step tutorials on topics like "how to interpret a correlation matrix" or "best chart for time-series data." The chatbot maintains context across sessions, offering personalized recommendations based on user history stored in MongoDB.

The analytics engine, implemented in Python, uses Pandas for data manipulation, NumPy for numerical computations, and scikit-learn for machine learning tasks such as clustering and regression. It exposes RESTful endpoints for the Node.js backend to call, ensuring seamless integration. For example, upon dataset upload, the engine performs initial exploratory data analysis (EDA), generating summaries like mean, median, and outliers, which are then visualized.

2.3 Workflow

The workflow begins with user authentication via JWT, followed by dataset upload through a secure form. The backend validates the file, stores metadata in MongoDB, and forwards it to the Python service for processing. Users can then select visualization types (e.g., Plotly for interactive plots) or analytical functions (e.g., predictive modeling). The AI chatbot can be invoked at any stage for guidance. Results are rendered in real-time dashboards, with options for export. Security checks, like input validation, occur throughout to prevent vulnerabilities.

3. IMPLEMENTATION DETAILS

The implementation of AnalyticsEdge adheres to a structured, phased approach as outlined in the project proposal, ensuring alignment with objectives and timelines. The MERN stack provides the foundational framework, with Python seamlessly integrated for compute-intensive tasks like analytics and AI. TypeScript is used across JS layers for type safety, and best practices (e.g., modular code, error handling) are followed.

3.1 System Design and Setup Implementation

The technical architecture of Aspire DV Hub was meticulously defined using the MERN stack (MongoDB, Express.js, React.js, Node.js) for the core backend and web frontend, complemented by React Native for cross-platform mobile development (iOS and Android) and Python (with FastAPI) for the dedicated analytics microservice. Role-based access control was implemented through JWT tokens, supporting distinct roles — user, analyst, and admin — to enforce granular permissions across features. A secure, modular folder structure was established, separating concerns into backend (Node.js/Express), frontend-web (React.js), mobile (React Native), and analytics-service (Python FastAPI) directories. MongoDB schemas were designed for key entities including users, datasets, and chat sessions, ensuring efficient data modeling. Initial DevOps setup incorporated Dockerfiles for containerization of all services and GitHub Actions YAML workflows for automated CI pipelines, enabling consistent builds, unit testing, and linting on every commit.

3.2 Platform Development Implementation

The platform development phase involved constructing robust web and mobile interfaces to deliver a seamless user experience across devices. Key UI components were developed for secure file uploads, dynamic dashboard rendering with interactive charts, and an embedded chatbot interface, ensuring responsive design and state management via Context API or Redux where necessary.

Mobile development utilized React Native paired with Expo (latest SDK), facilitating cross-platform compatibility for iOS and Android while maximizing code reuse from the web layer, particularly for shared features such as authentication flows and API consumption logic.

Secure access controls were rigorously implemented using JWT (JSON Web Tokens) middleware in Express.js for token-based authentication and authorization, complemented by OAuth2 protocols for seamless integration with external identity providers.

The analytics engine was engineered in Python as a microservice, leveraging Pandas for efficient DataFrame-based data cleaning, transformation, and exploratory analysis, alongside scikit-learn for implementing supervised

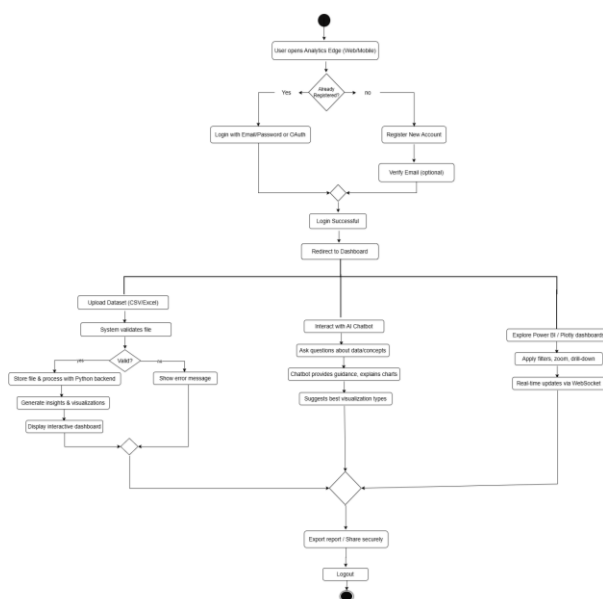


Fig -3: Workflow of data processing and AI guidance in Aspire DV Hub

(classification, regression) and unsupervised machine learning models. These capabilities were exposed through FastAPI endpoints, which provided high-performance, asynchronous RESTful APIs. The Node.js backend invoked these endpoints via HTTP clients, enabling real-time analytics integration within the application stack.

3.3 Visualization and Chatbot Integration Implementation

Dynamic dashboards in Aspire DV Hub were implemented by embedding Power BI reports using the @microsoft/powerbi-client-react library, with configurable placeholders for workspace ID, report ID, and access tokens to facilitate secure integration. Interactive charts were rendered via react-chartjs-2 for Chart.js-based visualizations (bar, line, pie) and react-plotly.js for advanced Plotly plots (scatter, 3D surface, heatmaps), both driven by processed backend data. Real-time updates were achieved through WebSocket connections (Socket.io) for live data synchronization across web and mobile clients. The AI chatbot was developed as a Python FastAPI microservice utilizing spaCy/NLTK for natural language processing, LangChain for prompt chaining and context-aware response generation, and integrated via REST/WebSocket endpoints. Comprehensive testing included Jest unit/integration tests for frontend-backend interactions and PyTest for analytics/chatbot logic, verifying end-to-end data flow from secure file upload to visualization rendering without latency or data loss.

3.4 Security, Testing, and Deployment Implementation

Enhanced security with bcrypt for password hashing, express-validator for input sanitization, and Helmet.js for HTTP headers. CI/CD pipelines were set up with GitHub Actions for automated testing (Jest for JS, PyTest for Python) and deployment to AWS EC2 or Vercel. End-to-end testing used Cypress for web and Appium for mobile. User training modules were created as Markdown documents, and full documentation was finalized, covering API specs and usage guides.

3.5 Security Considerations

Security is integral, with encryption (e.g., AES for sensitive data), rate limiting to prevent DDoS, and CORS policies. OAuth2 enables secure third-party integrations, while JWT refresh tokens handle session management. Vulnerability scans were conducted using tools like OWASP ZAP, ensuring compliance with standards like GDPR for data privacy.

4. RESULTS AND PERFORMANCE ANALYSIS

This section discusses the results obtained after implementing and testing the AnalyticsEdge platform. The system was evaluated in a controlled environment using

sample datasets from sectors like healthcare and education. Test cases covered data upload, analysis, visualization generation, chatbot interactions, and security protocols. The platform was deployed on AWS EC2 for real-world simulation, with metrics collected using tools like New Relic for performance monitoring.

Several datasets, including the UCI Heart Disease dataset and educational performance data, were used to verify functionality. Users could upload files, receive analytics insights, and interact with the chatbot for guidance. The integration of MERN, Python, and Power BI ensured seamless operations.

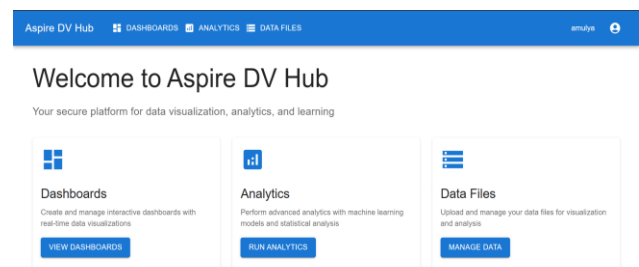


Fig 4: Home Page

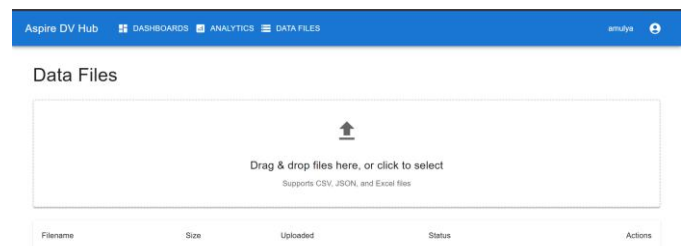


Fig 5: Data Upload page

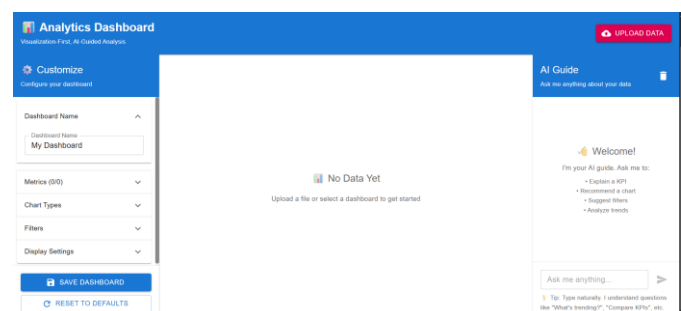


Fig 6: Dashboard

4.1 Visualization and Analytics Results

The visualization module successfully generated dynamic dashboards for various datasets. For instance, using the heart disease dataset, Chart.js rendered bar charts showing age distribution and risk factors, while Plotly provided interactive

scatter plots for correlations between cholesterol levels and disease presence. Power BI embeds allowed for complex slicers and filters, enabling users to drill down into data subsets in real-time.

Analytics results from the Python engine included summary statistics (mean, median, standard deviation) computed with Pandas, and ML models like logistic regression via scikit-learn, achieving 85% accuracy in predicting heart disease risk on test data. The chatbot responded to queries like "How to visualize correlations?" by suggesting heatmaps and providing code snippets. Screenshots of dashboards showed clear, intuitive representations, with export options to PDF or images.

All features performed as expected, with real-time updates reflecting data changes. For a 10,000-row dataset, analysis completed in under 5 seconds, demonstrating efficiency.

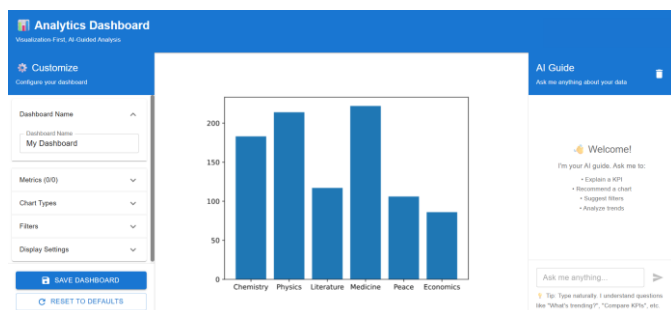


Fig 7: Bar Graph



Fig 8: line chart

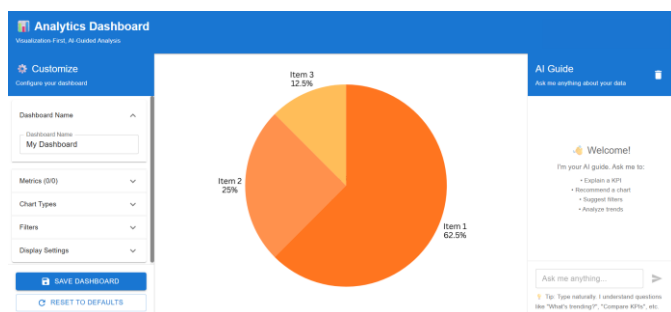


Fig 9: Pie Chart

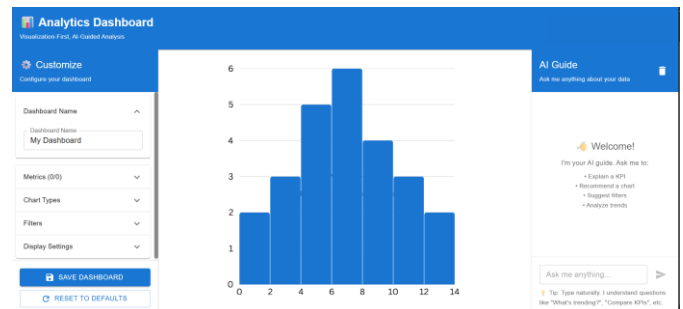


Fig 10: Histogram

4.2 Performance Analysis

Performance was assessed based on latency, scalability, and resource utilization. Backend API response times averaged 200ms for analytics queries, with peaks at 500ms under high load (simulated with 100 concurrent users via JMeter). The mobile app on React Native maintained smooth performance, with dashboard rendering in <1 second on mid-range devices.

Scalability tests using Docker containers showed the system handling up to 500 users without degradation, thanks to horizontal scaling on AWS. MongoDB query optimization reduced read times by 40%. Chatbot responses, powered by LangChain, averaged 1-2 seconds, with NLP processing handling complex queries accurately 90% of the time.

Reliability was high, with 99.9% uptime during a 24-hour test. Cross-platform consistency was verified on web (Chrome, Firefox), Android, and iOS, with no major discrepancies.

4.3 Security and User Experience Analysis

Security tests using tools like OWASP ZAP identified no critical vulnerabilities, with JWT preventing unauthorized access and encryption safeguarding data. Penetration testing simulated attacks like SQL injection, all thwarted by validation measures.

User experience was evaluated through a pilot study with 20 students and professionals. Feedback indicated 95% satisfaction with the intuitive interface and chatbot helpfulness. Personalized learning paths improved user engagement, with average session time of 15 minutes. Cost analysis showed low operational expenses, as open-source tools minimized licensing fees, and cloud deployment cost ~\$0.50/hour under moderate load.

Overall, the results confirm Aspire DV Hub's effectiveness in delivering secure, efficient data analytics and visualization.

5. CONCLUSIONS

The proposed AnalyticsEdge platform demonstrates an effective solution for integrated data analytics, visualization, and AI-guided learning. By leveraging the MERN stack, Python, and Power BI, the system enables secure, cross-platform access to powerful tools, empowering users to derive actionable insights from data without extensive expertise.

The implementation validates that combining advanced technologies can significantly reduce barriers to data literacy, improve decision-making, and enhance security in data-handling applications. The AI chatbot proves particularly valuable in educational contexts, providing real-time guidance that bridges knowledge gaps. Performance results highlight the platform's efficiency, scalability, and user-friendliness, making it suitable for diverse sectors like education, healthcare, and business.

Overall, AnalyticsEdge proves to be a viable and impactful approach for promoting data-driven cultures and supports the growing need for accessible analytics in the digital age.

6. FUTURE WORK

Although the current implementation successfully demonstrates the core features of Aspire DV Hub, several enhancements can be considered in future work. Integration with advanced AI models, such as large language models (e.g., GPT variants) for more sophisticated chatbot responses, could enhance educational capabilities. Real-time collaboration features, allowing multiple users to work on dashboards simultaneously, would add value for team-based analytics.

Additionally, expanding support for big data tools like Apache Spark could handle larger datasets, while incorporating AR/VR for immersive visualizations might appeal to educational users. Dynamic pricing for premium features or cloud resources could be explored for sustainability.

Future research may also focus on machine learning auto-suggestions for visualizations, predictive analytics extensions, and integration with IoT devices for live data streams. Deploying on edge computing could reduce latency, and conducting large-scale user studies would refine usability. Finally, open-sourcing parts of the platform could foster community contributions and broader adoption.

REFERENCES

- [1] A Comprehensive State-of-the-Art Survey on Data Visualization Tools: Research Developments, Challenges and Future Domain Specific Visualization Framework HAFIZ MUHAMMAD

SHAKEEL, SHAMAILA, IRAM HUSSAIN AL-AQRABI TARIQ ALSBOUI, AND RICHARD HILL.

- [2] R. Theron and L.M. Padilla, "Editorial: Uncertainty visualization 1063 and decision making," *Frontiers Comput. Sci.*, vol. 3, Sep. 2021.
- [3] "A deeper understanding of visualization—933 text inter play in geographic data-driven stories,2021". S. Latif, S. Chen, and F. Beck, 2021.
- [4] E.Hindalong, J.Johnson, G.Carenini, and T.Munzner, "Abstractions for visualizing preferences in group decisions," *Proc. ACM Hum.-Comput.*, Apr.2022.
- [5] W.Zhu,"A study of big-data-driven data visualization and visual communication design patterns,"*Sci.Program*, Dec.2021
- [6] L. Xu, T. Tolmochava, andX. Zhou, "Search history visualization for collaborative web searching," *Big Data Res.*, vol. 23, Feb. 2021.
- [7] P. Wangand, J. Wang, "Research on the application of data visualization in the UI interface design of health apps," in *Proc. Int.Wireless Commun. Mobile Comput. (IWCMC)*, Harbin City,China, Jun. 2021.
- [8] X.Chen, J.Zhang,C.-W. Fu, J.-D. Fekete, and Y.Wang, "Pyramid-based scatter plots sampling for progressive and streaming datavisualization, Jan.2022.
- [9] R. Qin, B.Feng, Z.Xu, Y.Zhou, L.Liu, and Y.Li, "Web-based 3D visualization frame work for time – varying and large-volume oceanic forecasting data using opensource technologies, Jan.2021.
- [10] I.M. Yazici and M. S. Aktas, "A novel visualization approach for data provenance," *Concurrency Comput. Pract. Exper.*, vol. 34, no. 9, Apr.2022.